

**P2RY6 Antibody (C-term)**  
**Affinity Purified Rabbit Polyclonal Antibody (Pab)**  
**Catalog # AP16054b**

**Specification**

---

**P2RY6 Antibody (C-term) - Product Information**

Application	WB,E
Primary Accession	<a href="#">Q15077</a>
Other Accession	<a href="#">NP_789768.1</a> , <a href="#">NP_789767.1</a> , <a href="#">NP_004145.1</a>
Reactivity	Human
Host	Rabbit
Clonality	Polyclonal
Isotype	Rabbit IgG
Calculated MW	36429
Antigen Region	286-314

**P2RY6 Antibody (C-term) - Additional Information**

**Gene ID** 5031

**Other Names**

P2Y purinoceptor 6, P2Y6, P2RY6

**Target/Specificity**

This P2RY6 antibody is generated from rabbits immunized with a KLH conjugated synthetic peptide between 286-314 amino acids from the C-terminal region of human P2RY6.

**Dilution**

WB~~1:1000

E~~Use at an assay dependent concentration.

**Format**

Purified polyclonal antibody supplied in PBS with 0.09% (W/V) sodium azide. This antibody is purified through a protein A column, followed by peptide affinity purification.

**Storage**

Maintain refrigerated at 2-8°C for up to 2 weeks. For long term storage store at -20°C in small aliquots to prevent freeze-thaw cycles.

**Precautions**

P2RY6 Antibody (C-term) is for research use only and not for use in diagnostic or therapeutic procedures.

**P2RY6 Antibody (C-term) - Protein Information**

**Name** P2RY6

**Function** Receptor for extracellular UDP > UTP > ATP. The activity of this receptor is mediated by

G proteins which activate a phosphatidylinositol-calcium second messenger system.

#### **Cellular Location**

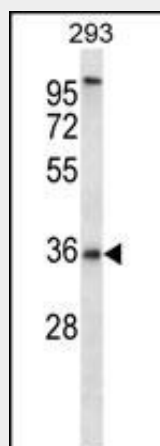
Cell membrane; Multi-pass membrane protein.

#### **P2RY6 Antibody (C-term) - Protocols**

Provided below are standard protocols that you may find useful for product applications.

- [Western Blot](#)
- [Blocking Peptides](#)
- [Dot Blot](#)
- [Immunohistochemistry](#)
- [Immunofluorescence](#)
- [Immunoprecipitation](#)
- [Flow Cytometry](#)
- [Cell Culture](#)

#### **P2RY6 Antibody (C-term) - Images**



P2RY6 Antibody (C-term) (Cat. #AP16054b) western blot analysis in 293 cell line lysates (35ug/lane). This demonstrates the P2RY6 antibody detected the P2RY6 protein (arrow).

#### **P2RY6 Antibody (C-term) - Background**

The product of this gene belongs to the family of G-protein coupled receptors. This family has several receptor subtypes with different pharmacological selectivity, which overlaps in some cases, for various adenosine and uridine nucleotides. This receptor is responsive to UDP, partially responsive to UTP and ADP, and not responsive to ATP. Four transcript variants encoding the same isoform have been identified for this gene. [provided by RefSeq].

#### **P2RY6 Antibody (C-term) - References**

Rose, J.E., et al. Mol. Med. 16 (7-8), 247-253 (2010) :  
Ben Yebdri, F., et al. Eur. J. Immunol. 39(10):2885-2894(2009)  
Wong, A.M., et al. Am. J. Respir. Cell Mol. Biol. 40(6):733-745(2009)  
Jiang, Y., et al. J. Immunol. 182(2):1129-1137(2009)

Nishida, M., et al. EMBO J. 27(23):3104-3115(2008)