

**NUDC Antibody (Center)**  
**Affinity Purified Rabbit Polyclonal Antibody (Pab)**  
**Catalog # AP16056c****Specification**

---

**NUDC Antibody (Center) - Product Information**

Application	WB,E
Primary Accession	<a href="#">O9Y266</a>
Other Accession	<a href="#">NP_006591.1</a>
Reactivity	Human
Host	Rabbit
Clonality	Polyclonal
Isotype	Rabbit IgG
Calculated MW	38243
Antigen Region	105-133

**NUDC Antibody (Center) - Additional Information****Gene ID** 10726**Other Names**

Nuclear migration protein nudC, Nuclear distribution protein C homolog, NUDC

**Target/Specificity**

This NUDC antibody is generated from rabbits immunized with a KLH conjugated synthetic peptide between 105-133 amino acids from the Central region of human NUDC.

**Dilution**

WB~~1:1000

**Format**

Purified polyclonal antibody supplied in PBS with 0.09% (W/V) sodium azide. This antibody is purified through a protein A column, followed by peptide affinity purification.

**Storage**

Maintain refrigerated at 2-8°C for up to 2 weeks. For long term storage store at -20°C in small aliquots to prevent freeze-thaw cycles.

**Precautions**

NUDC Antibody (Center) is for research use only and not for use in diagnostic or therapeutic procedures.

**NUDC Antibody (Center) - Protein Information****Name** NUDC**Function** Plays a role in neurogenesis and neuronal migration (By similarity). Necessary for correct formation of mitotic spindles and chromosome separation during mitosis

(PubMed:[12852857](#), PubMed:[12679384](#), PubMed:[25789526](#)). Necessary for cytokinesis and cell proliferation (PubMed:[12852857](#), PubMed:[12679384](#)).

#### Cellular Location

Cytoplasm, cytoskeleton. Nucleus. Cytoplasm, cytoskeleton, spindle. Midbody Note=In a filamentous pattern adjacent to the nucleus of migrating cerebellar granule cells. Colocalizes with tubulin and dynein and with the microtubule organizing center. Distributed throughout the cytoplasm of non-migrating cells. A small proportion is nuclear, in a punctate pattern. Localizes to the mitotic spindle in a EML4-dependent manner (PubMed:25789526).

#### Tissue Location

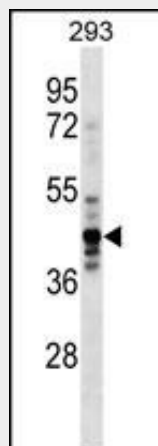
Ubiquitous. Highly expressed in fetal liver, kidney, lung and brain. Highly expressed in adult pancreas, kidney, skeletal muscle, liver, lung, placenta, prostate, brain and heart

### NUDC Antibody (Center) - Protocols

Provided below are standard protocols that you may find useful for product applications.

- [Western Blot](#)
- [Blocking Peptides](#)
- [Dot Blot](#)
- [Immunohistochemistry](#)
- [Immunofluorescence](#)
- [Immunoprecipitation](#)
- [Flow Cytometry](#)
- [Cell Culture](#)

### NUDC Antibody (Center) - Images



NUDC Antibody (Center) (Cat. #AP16056c) western blot analysis in 293 cell line lysates (35ug/lane). This demonstrates the NUDC antibody detected the NUDC protein (arrow).

### NUDC Antibody (Center) - Background

NudC was first identified as a regulator of nuclear movement in the asexual reproductive cycle of the filamentous fungus *Aspergillus nidulans*. Human NUDC is a nuclear movement protein that associates with dynein (see DYNC1H1; MIM 600112) (Aumais et al., 2003 [PubMed 12679384]).

**NUDC Antibody (Center) - References**

Zhu, X.J., et al. J. Biol. Chem. 285(39):29903-29910(2010)  
Chen, W.M., et al. J. Biol. Chem. 285(34):26697-26709(2010)  
Pang, S.F., et al. Exp. Cell Res. 315(20):3563-3573(2009)  
Tang, Y.S., et al. Leukemia 22(5):1018-1025(2008)  
Zhang, Y.P., et al. Exp. Cell Res. 313(15):3210-3221(2007)