

CAPG Antibody (Center)
Affinity Purified Rabbit Polyclonal Antibody (Pab)
Catalog # AP16057C**Specification**

CAPG Antibody (Center) - Product Information

Application	WB,E
Primary Accession	P40121
Other Accession	Q6AYC4 , P24452 , NP_001738.2
Reactivity	Human
Predicted	Mouse, Rat
Host	Rabbit
Clonality	Polyclonal
Isotype	Rabbit IgG
Calculated MW	38499
Antigen Region	181-209

CAPG Antibody (Center) - Additional Information**Gene ID** 822**Other Names**

Macrophage-capping protein, Actin regulatory protein CAP-G, CAPG, AFCP, MCP

Target/Specificity

This CAPG antibody is generated from rabbits immunized with a KLH conjugated synthetic peptide between 181-209 amino acids from the Central region of human CAPG.

Dilution

WB~~1:1000

E~~Use at an assay dependent concentration.

Format

Purified polyclonal antibody supplied in PBS with 0.09% (W/V) sodium azide. This antibody is purified through a protein A column, followed by peptide affinity purification.

Storage

Maintain refrigerated at 2-8°C for up to 2 weeks. For long term storage store at -20°C in small aliquots to prevent freeze-thaw cycles.

Precautions

CAPG Antibody (Center) is for research use only and not for use in diagnostic or therapeutic procedures.

CAPG Antibody (Center) - Protein Information**Name** CAPG

Synonyms AFCP, MCP

Function Calcium-sensitive protein which reversibly blocks the barbed ends of actin filaments but does not sever preformed actin filaments. May play an important role in macrophage function. May play a role in regulating cytoplasmic and/or nuclear structures through potential interactions with actin. May bind DNA.

Cellular Location

Nucleus. Cytoplasm Melanosome. Cell projection, lamellipodium {ECO:0000250|UniProtKB:P24452}. Cell projection, ruffle {ECO:0000250|UniProtKB:P24452}. Note=In macrophages, may be predominantly cytoplasmic. Nuclear localization was observed in fibroblasts. In macrophages, present at the membrane-cytoplasm interface. In activated macrophages, concentrated in the ruffles of the leading lamellipodia. {ECO:0000250|UniProtKB:P24452}

Tissue Location

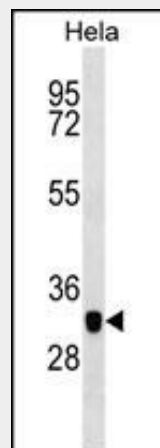
Macrophages and macrophage-like cells.

CAPG Antibody (Center) - Protocols

Provided below are standard protocols that you may find useful for product applications.

- [Western Blot](#)
- [Blocking Peptides](#)
- [Dot Blot](#)
- [Immunohistochemistry](#)
- [Immunofluorescence](#)
- [Immunoprecipitation](#)
- [Flow Cytometry](#)
- [Cell Culture](#)

CAPG Antibody (Center) - Images



CAPG Antibody (Center) (Cat. #AP16057c) western blot analysis in HeLa cell line lysates (35ug/lane). This demonstrates the CAPG antibody detected the CAPG protein (arrow).

CAPG Antibody (Center) - Background

This gene encodes a member of the gelsolin/villin family of actin-regulatory proteins. The encoded protein reversibly blocks

the barbed ends of F-actin filaments in a Ca²⁺ and phosphoinositide-regulated manner, but does not sever preformed actin filaments. By capping the barbed ends of actin filaments, the encoded protein contributes to the control of actin-based motility in non-muscle cells. Alternatively spliced transcript variants have been observed, but have not been fully described. [provided by RefSeq].

CAPG Antibody (Center) - References

- Li, M.X., et al. *Med. Oncol.* 27(1):134-144(2010)
- Burillo, E., et al. *Atherosclerosis* 207(1):32-37(2009)
- Zhang, R., et al. *Am. J. Respir. Cell Mol. Biol.* 41(4):467-475(2009)
- Hubert, T., et al. *Biochem. Biophys. Res. Commun.* 380(1):166-170(2009)
- Chen, M., et al. *J. Biol. Chem.* 284(3):1484-1494(2009)