

Mouse Cabc1 Antibody (Center)
Affinity Purified Rabbit Polyclonal Antibody (Pab)
Catalog # AP16067c**Specification**

Mouse Cabc1 Antibody (Center) - Product Information

Application	WB,E
Primary Accession	Q60936
Other Accession	Q5BJQ0 , NP_075830.2 , NP_001156762.1
Reactivity	Mouse
Predicted	Rat
Host	Rabbit
Clonality	Polyclonal
Isotype	Rabbit IgG
Calculated MW	71743
Antigen Region	396-423

Mouse Cabc1 Antibody (Center) - Additional Information**Gene ID** 67426**Other Names**

Chaperone activity of bc1 complex-like, mitochondrial, Chaperone-ABC1-like, 2711-, aarF domain-containing protein kinase 3, Adck3, Cabc1

Target/Specificity

This Mouse Cabc1 antibody is generated from rabbits immunized with a KLH conjugated synthetic peptide between 396-423 amino acids from the Central region of mouse Cabc1.

Dilution

WB~~1:1000

E~~Use at an assay dependent concentration.

Format

Purified polyclonal antibody supplied in PBS with 0.09% (W/V) sodium azide. This antibody is purified through a protein A column, followed by peptide affinity purification.

Storage

Maintain refrigerated at 2-8°C for up to 2 weeks. For long term storage store at -20°C in small aliquots to prevent freeze-thaw cycles.

Precautions

Mouse Cabc1 Antibody (Center) is for research use only and not for use in diagnostic or therapeutic procedures.

Mouse Cabc1 Antibody (Center) - Protein Information**Name** Coq8a {ECO:0000250|UniProtKB:Q8NI60}

Function Atypical kinase involved in the biosynthesis of coenzyme Q, also named ubiquinone, an essential lipid-soluble electron transporter for aerobic cellular respiration (PubMed:[27499294](#)). Its substrate specificity is still unclear: may act as a protein kinase that mediates phosphorylation of COQ3 (By similarity). According to other reports, acts as a small molecule kinase, possibly a lipid kinase that phosphorylates a prenyl lipid in the ubiquinone biosynthesis pathway, as suggested by its ability to bind coenzyme Q lipid intermediates (By similarity). However, the small molecule kinase activity was not confirmed by another publication (By similarity). Shows an unusual selectivity for binding ADP over ATP (By similarity).

Cellular Location

Mitochondrion membrane {ECO:0000250|UniProtKB:Q8NI60}; Single-pass membrane protein

Tissue Location

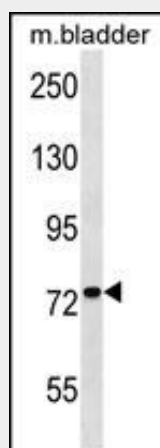
Present in various tissues (at protein level).

Mouse Cabc1 Antibody (Center) - Protocols

Provided below are standard protocols that you may find useful for product applications.

- [Western Blot](#)
- [Blocking Peptides](#)
- [Dot Blot](#)
- [Immunohistochemistry](#)
- [Immunofluorescence](#)
- [Immunoprecipitation](#)
- [Flow Cytometry](#)
- [Cell Culture](#)

Mouse Cabc1 Antibody (Center) - Images



Mouse Cabc1 Antibody (Center) (Cat. #AP16067c) western blot analysis in mouse bladder tissue lysates (35ug/lane). This demonstrates the Cabc1 antibody detected the Cabc1 protein (arrow).

Mouse Cabc1 Antibody (Center) - Background

Cabc1 may be a chaperone-like protein essential for the proper conformation and functioning of protein complexes in the respiratory chain.

Mouse Cabc1 Antibody (Center) - References

Pagliarini, D.J., et al. Cell 134(1):112-123(2008)

Garcia-Frigola, C., et al. Brain Res. Mol. Brain Res. 122(2):133-150(2004)