

ITGB7 Antibody (C-term)
Affinity Purified Rabbit Polyclonal Antibody (Pab)
Catalog # AP16093b**Specification**

ITGB7 Antibody (C-term) - Product Information

Application	WB,E
Primary Accession	P26010
Other Accession	NP_000880.1
Reactivity	Human
Host	Rabbit
Clonality	Polyclonal
Isotype	Rabbit IgG
Calculated MW	86903
Antigen Region	737-765

ITGB7 Antibody (C-term) - Additional Information**Gene ID** 3695**Other Names**

Integrin beta-7, Gut homing receptor beta subunit, ITGB7

Target/Specificity

This ITGB7 antibody is generated from rabbits immunized with a KLH conjugated synthetic peptide between 737-765 amino acids from the C-terminal region of human ITGB7.

Dilution

WB~~1:1000

E~~Use at an assay dependent concentration.

Format

Purified polyclonal antibody supplied in PBS with 0.09% (W/V) sodium azide. This antibody is purified through a protein A column, followed by peptide affinity purification.

Storage

Maintain refrigerated at 2-8°C for up to 2 weeks. For long term storage store at -20°C in small aliquots to prevent freeze-thaw cycles.

Precautions

ITGB7 Antibody (C-term) is for research use only and not for use in diagnostic or therapeutic procedures.

ITGB7 Antibody (C-term) - Protein Information**Name** ITGB7**Function** Integrin ITGA4/ITGB7 (alpha-4/beta-7) (Peyer patches-specific homing receptor LPAM-1)

is an adhesion molecule that mediates lymphocyte migration and homing to gut-associated lymphoid tissue (GALT) (Probable). Integrin ITGA4/ITGB7 interacts with the cell surface adhesion molecules MADCAM1 which is normally expressed by the vascular endothelium of the gastrointestinal tract (PubMed:[10837471](#), PubMed:[14608374](#)). Also interacts with VCAM1 and fibronectin, an extracellular matrix component (Probable). It recognizes one or more domains within the alternatively spliced CS-1 region of fibronectin (Probable). Interactions involve the tripeptide L-D-T in MADCAM1, and L-D-V in fibronectin (Probable). Integrin ITGA4/ITGB7 (alpha-E/beta-7, HML-1) is a receptor for E-cadherin (PubMed:[10837471](#)).

Cellular Location

Cell membrane; Single-pass type I membrane protein

Tissue Location

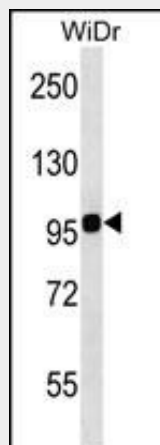
Expressed in a variety of leukocyte lines.

ITGB7 Antibody (C-term) - Protocols

Provided below are standard protocols that you may find useful for product applications.

- [Western Blot](#)
- [Blocking Peptides](#)
- [Dot Blot](#)
- [Immunohistochemistry](#)
- [Immunofluorescence](#)
- [Immunoprecipitation](#)
- [Flow Cytometry](#)
- [Cell Culture](#)

ITGB7 Antibody (C-term) - Images



ITGB7 Antibody (C-term) (Cat. #AP16093b) western blot analysis in WiDr cell line lysates (35ug/lane). This demonstrates the ITGB7 antibody detected the ITGB7 protein (arrow).

ITGB7 Antibody (C-term) - Background

Integrin alpha-4/beta-7 (Peyer patches-specific homing receptor LPAM-1) is an adhesion molecule that mediates lymphocyte migration and homing to gut-associated lymphoid tissue (GALT). Integrin alpha-4/beta-7 interacts with the cell surface adhesion molecules MADCAM1 which is normally expressed by the vascular endothelium of the gastrointestinal tract. Interacts also with VCAM1 and fibronectin, an extracellular matrix component. It recognizes one or more domains within the

alternatively spliced CS-1 region of fibronectin. Interactions involves the tripeptide L-D-T in MADCAM1, and L-D-V in fibronectin. Binds to HIV-1 gp120, thereby allowing the virus to enter GALT, which is thought to be the major trigger of AIDS disease. Interaction would involve a tripeptide L-D-I in HIV-1 gp120. Integrin alpha-E/beta-7 (HML-1) is a receptor for E-cadherin.

ITGB7 Antibody (C-term) - References

Cicala, C., et al. Proc. Natl. Acad. Sci. U.S.A. 106(49):20877-20882(2009)
Pentikainen, U., et al. J. Mol. Biol. 393(3):644-657(2009)
Lad, Y., et al. J. Biol. Chem. 283(50):35154-35163(2008)
Monteiro, P., et al. Biochem. Biophys. Res. Commun. 358(2):442-448(2007)
Le Floch, A., et al. J. Exp. Med. 204(3):559-570(2007)