

**TMEM102 Antibody (N-term)**  
**Affinity Purified Rabbit Polyclonal Antibody (Pab)**  
**Catalog # AP16098a****Specification**

---

**TMEM102 Antibody (N-term) - Product Information**

Application	WB,E
Primary Accession	<a href="#">Q8N9M5</a>
Other Accession	<a href="#">NP_848613.1</a>
Reactivity	Human
Host	Rabbit
Clonality	Polyclonal
Isotype	Rabbit IgG
Calculated MW	54175
Antigen Region	156-185

**TMEM102 Antibody (N-term) - Additional Information****Gene ID** 284114**Other Names**

Transmembrane protein 102, Common beta-chain associated protein, CBAP, TMEM102

**Target/Specificity**

This TMEM102 antibody is generated from rabbits immunized with a KLH conjugated synthetic peptide between 156-185 amino acids from the N-terminal region of human TMEM102.

**Dilution**

WB~~1:1000

E~~Use at an assay dependent concentration.

**Format**

Purified polyclonal antibody supplied in PBS with 0.09% (W/V) sodium azide. This antibody is purified through a protein A column, followed by peptide affinity purification.

**Storage**

Maintain refrigerated at 2-8°C for up to 2 weeks. For long term storage store at -20°C in small aliquots to prevent freeze-thaw cycles.

**Precautions**

TMEM102 Antibody (N-term) is for research use only and not for use in diagnostic or therapeutic procedures.

**TMEM102 Antibody (N-term) - Protein Information****Name** TMEM102**Function** Selectively involved in CSF2 deprivation-induced apoptosis via a

mitochondria-dependent pathway.

#### **Cellular Location**

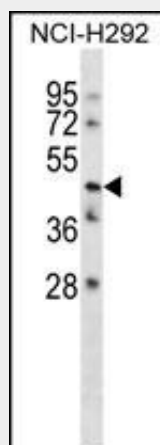
Cell membrane; Single-pass membrane protein Note=Although it is found at the cell surface, the majority of the molecules seems to be located in intracellular compartments

#### **TMEM102 Antibody (N-term) - Protocols**

Provided below are standard protocols that you may find useful for product applications.

- [Western Blot](#)
- [Blocking Peptides](#)
- [Dot Blot](#)
- [Immunohistochemistry](#)
- [Immunofluorescence](#)
- [Immunoprecipitation](#)
- [Flow Cytometry](#)
- [Cell Culture](#)

#### **TMEM102 Antibody (N-term) - Images**



TMEM102 Antibody (N-term) (Cat. #AP16098a) western blot analysis in NCI-H292 cell line lysates (35ug/lane). This demonstrates the TMEM102 antibody detected the TMEM102 protein (arrow).

#### **TMEM102 Antibody (N-term) - References**

Kao, C.J., et al. Oncogene 27(10):1397-1403(2008) Jin, J., et al. Curr. Biol. 14(16):1436-1450(2004)