

**SRPRB Antibody (C-term)**  
**Affinity Purified Rabbit Polyclonal Antibody (Pab)**  
**Catalog # AP16100b****Specification**

---

**SRPRB Antibody (C-term) - Product Information**

Application	WB,E
Primary Accession	<a href="#">Q9Y5M8</a>
Other Accession	<a href="#">Q4FZX7</a> , <a href="#">P47758</a> , <a href="#">NP_067026.3</a>
Reactivity	Human
Predicted	Mouse, Rat
Host	Rabbit
Clonality	Polyclonal
Isotype	Rabbit IgG
Calculated MW	29702
Antigen Region	207-236

**SRPRB Antibody (C-term) - Additional Information****Gene ID** 58477**Other Names**

Signal recognition particle receptor subunit beta, SR-beta, Protein APMCF1, SRPRB

**Target/Specificity**

This SRPRB antibody is generated from rabbits immunized with a KLH conjugated synthetic peptide between 207-236 amino acids from the C-terminal region of human SRPRB.

**Dilution**

WB~~1:1000

**Format**

Purified polyclonal antibody supplied in PBS with 0.09% (W/V) sodium azide. This antibody is purified through a protein A column, followed by peptide affinity purification.

**Storage**

Maintain refrigerated at 2-8°C for up to 2 weeks. For long term storage store at -20°C in small aliquots to prevent freeze-thaw cycles.

**Precautions**

SRPRB Antibody (C-term) is for research use only and not for use in diagnostic or therapeutic procedures.

**SRPRB Antibody (C-term) - Protein Information****Name** SRPRB**Function** Component of the signal recognition particle (SRP) complex receptor (SR) (By similarity).

Ensures, in conjunction with the SRP complex, the correct targeting of the nascent secretory proteins to the endoplasmic reticulum membrane system (By similarity). May mediate the membrane association of SR (By similarity).

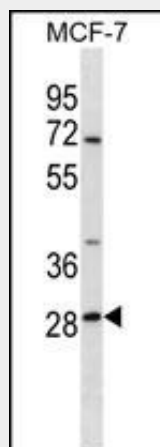
**Cellular Location**

Endoplasmic reticulum membrane {ECO:0000250|UniProtKB:O13950}; Single-pass membrane protein

**SRPRB Antibody (C-term) - Protocols**

Provided below are standard protocols that you may find useful for product applications.

- [Western Blot](#)
- [Blocking Peptides](#)
- [Dot Blot](#)
- [Immunohistochemistry](#)
- [Immunofluorescence](#)
- [Immunoprecipitation](#)
- [Flow Cytometry](#)
- [Cell Culture](#)

**SRPRB Antibody (C-term) - Images**

SRPRB Antibody (C-term) (Cat. #AP16100b) western blot analysis in MCF-7 cell line lysates (35ug/lane). This demonstrates the SRPRB antibody detected the SRPRB protein (arrow).

**SRPRB Antibody (C-term) - Background**

Component of the SRP (signal recognition particle) receptor. Ensures, in conjunction with the signal recognition particle, the correct targeting of the nascent secretory proteins to the endoplasmic reticulum membrane system. Has GTPase activity. May mediate the membrane association of SRPR (By similarity).