

**TSLP Antibody (C-term)**  
**Affinity Purified Rabbit Polyclonal Antibody (Pab)**  
**Catalog # AP16103b****Specification**

---

**TSLP Antibody (C-term) - Product Information**

Application	WB,E
Primary Accession	<a href="#">O969D9</a>
Other Accession	<a href="#">NP_149024.1</a>
Reactivity	Human
Host	Rabbit
Clonality	Polyclonal
Isotype	Rabbit IgG
Calculated MW	18141
Antigen Region	101-130

**TSLP Antibody (C-term) - Additional Information****Gene ID** 85480**Other Names**

Thymic stromal lymphopoietin, TSLP

**Target/Specificity**

This TSLP antibody is generated from rabbits immunized with a KLH conjugated synthetic peptide between 101-130 amino acids from the C-terminal region of human TSLP.

**Dilution**

WB~~1:1000

**Format**

Purified polyclonal antibody supplied in PBS with 0.09% (W/V) sodium azide. This antibody is purified through a protein A column, followed by peptide affinity purification.

**Storage**

Maintain refrigerated at 2-8°C for up to 2 weeks. For long term storage store at -20°C in small aliquots to prevent freeze-thaw cycles.

**Precautions**

TSLP Antibody (C-term) is for research use only and not for use in diagnostic or therapeutic procedures.

**TSLP Antibody (C-term) - Protein Information****Name** TSLP

**Function** [Isoform 1]: Cytokine that induces the release of T-cell- attracting chemokines from monocytes and, in particular, enhances the maturation of CD11c(+) dendritic cells. Can induce

allergic inflammation by directly activating mast cells.

#### Cellular Location

Secreted.

#### Tissue Location

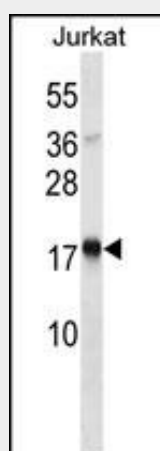
Isoform 1 is expressed in a number of tissues including heart, liver and prostate. Isoform 2 is the predominant form in keratinocytes of oral mucosa, skin and in salivary glands. It is secreted into saliva.

### TSLP Antibody (C-term) - Protocols

Provided below are standard protocols that you may find useful for product applications.

- [Western Blot](#)
- [Blocking Peptides](#)
- [Dot Blot](#)
- [Immunohistochemistry](#)
- [Immunofluorescence](#)
- [Immunoprecipitation](#)
- [Flow Cytometry](#)
- [Cell Culture](#)

### TSLP Antibody (C-term) - Images



TSLP Antibody (C-term) (Cat. #AP16103b) western blot analysis in Jurkat cell line lysates (35ug/lane). This demonstrates the TSLP antibody detected the TSLP protein (arrow).

### TSLP Antibody (C-term) - Background

This gene encodes a hemopoietic cytokine proposed to signal through a heterodimeric receptor complex composed of the thymic stromal lymphopoietin receptor and the IL-7R alpha chain. It mainly impacts myeloid cells and induces the release of T cell-attracting chemokines from monocytes and enhances the maturation of CD11c(+) dendritic cells. Alternative splicing of this gene results in two transcript variants.

### TSLP Antibody (C-term) - References

Hunninghake, G.M., et al. Allergy 65(12):1566-1575(2010)  
Angelova-Fischer, I., et al. J. Invest. Dermatol. 130(10):2505-2507(2010)  
Smelter, D.F., et al. J. Immunol. 185(5):3035-3040(2010)  
Wu, W.H., et al. J. Allergy Clin. Immunol. 126(2):290-299(2010)  
Harada, M., et al. Am. J. Respir. Cell Mol. Biol. (2010) In press :