

**SGCD Antibody (C-term)**  
**Affinity Purified Rabbit Polyclonal Antibody (Pab)**  
**Catalog # AP16115b****Specification**

---

**SGCD Antibody (C-term) - Product Information**

Application	WB,E
Primary Accession	<a href="#">Q92629</a>
Other Accession	<a href="#">NP_001121681.1</a> , <a href="#">NP_000328.2</a> , <a href="#">NP_758447.1</a>
Reactivity	Mouse
Host	Rabbit
Clonality	Polyclonal
Isotype	Rabbit IgG
Calculated MW	32071
Antigen Region	232-261

**SGCD Antibody (C-term) - Additional Information****Gene ID** 6444**Other Names**

Delta-sarcoglycan, Delta-SG, 35 kDa dystrophin-associated glycoprotein, 35DAG, SGCD

**Target/Specificity**

This SGCD antibody is generated from rabbits immunized with a KLH conjugated synthetic peptide between 232-261 amino acids from the C-terminal region of human SGCD.

**Dilution**

WB~~1:1000

E~~Use at an assay dependent concentration.

**Format**

Purified polyclonal antibody supplied in PBS with 0.09% (W/V) sodium azide. This antibody is purified through a protein A column, followed by peptide affinity purification.

**Storage**

Maintain refrigerated at 2-8°C for up to 2 weeks. For long term storage store at -20°C in small aliquots to prevent freeze-thaw cycles.

**Precautions**

SGCD Antibody (C-term) is for research use only and not for use in diagnostic or therapeutic procedures.

**SGCD Antibody (C-term) - Protein Information****Name** SGCD**Function** Component of the sarcoglycan complex, a subcomplex of the dystrophin-glycoprotein

complex which forms a link between the F-actin cytoskeleton and the extracellular matrix.

#### Cellular Location

Cell membrane, sarcolemma; Single-pass type II membrane protein. Cytoplasm, cytoskeleton

#### Tissue Location

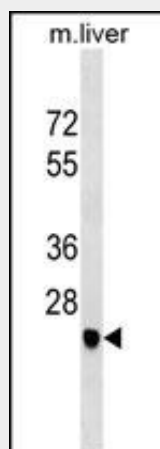
Most strongly expressed in skeletal and cardiac muscle. Also detected in smooth muscle. Weak expression in brain and lung

### SGCD Antibody (C-term) - Protocols

Provided below are standard protocols that you may find useful for product applications.

- [Western Blot](#)
- [Blocking Peptides](#)
- [Dot Blot](#)
- [Immunohistochemistry](#)
- [Immunofluorescence](#)
- [Immunoprecipitation](#)
- [Flow Cytometry](#)
- [Cell Culture](#)

### SGCD Antibody (C-term) - Images



SGCD Antibody (C-term) (Cat. #AP16115b) western blot analysis in mouse liver tissue lysates (35ug/lane). This demonstrates the SGCD antibody detected the SGCD protein (arrow).

### SGCD Antibody (C-term) - Background

The protein encoded by this gene is one of the four known components of the sarcoglycan complex, which is a subcomplex of the dystrophin-glycoprotein complex (DGC). DGC forms a link between the F-actin cytoskeleton and the extracellular matrix. This protein is expressed most abundantly in skeletal and cardiac muscle. Mutations in this gene have been associated with autosomal recessive limb-girdle muscular dystrophy and dilated cardiomyopathy. Alternatively spliced transcript variants encoding distinct isoforms have been observed for this gene.

### SGCD Antibody (C-term) - References

Bailey, S.D., et al. Diabetes Care 33(10):2250-2253(2010)  
Rose, J.E., et al. Mol. Med. 16 (7-8), 247-253 (2010) :  
Zimmerman, R.S., et al. Genet. Med. 12(5):268-278(2010)  
Ordonez-Razo, R.M., et al. Genet Test Mol Biomarkers 14(2):237-240(2010)  
Lin, W.Y., et al. BMC Res Notes 3, 26 (2010) :