

**CCL25 Antibody (Center)**  
**Affinity Purified Rabbit Polyclonal Antibody (Pab)**  
**Catalog # AP16140c****Specification**

---

**CCL25 Antibody (Center) - Product Information**

Application	WB,E
Primary Accession	<a href="#">O15444</a>
Other Accession	<a href="#">NP_005615.2</a>
Reactivity	Human
Host	Rabbit
Clonality	Polyclonal
Isotype	Rabbit IgG
Calculated MW	16609
Antigen Region	66-95

**CCL25 Antibody (Center) - Additional Information****Gene ID** 6370**Other Names**

C-C motif chemokine 25, Chemokine TECK, Small-inducible cytokine A25, Thymus-expressed chemokine, CCL25, SCYA25, TECK

**Target/Specificity**

This CCL25 antibody is generated from rabbits immunized with a KLH conjugated synthetic peptide between 66-95 amino acids from the Central region of human CCL25.

**Dilution**

WB~~1:1000

E~~Use at an assay dependent concentration.

**Format**

Purified polyclonal antibody supplied in PBS with 0.09% (W/V) sodium azide. This antibody is purified through a protein A column, followed by peptide affinity purification.

**Storage**

Maintain refrigerated at 2-8°C for up to 2 weeks. For long term storage store at -20°C in small aliquots to prevent freeze-thaw cycles.

**Precautions**

CCL25 Antibody (Center) is for research use only and not for use in diagnostic or therapeutic procedures.

**CCL25 Antibody (Center) - Protein Information****Name** CCL25

**Synonyms** SCYA25, TECK

**Function** Potentially involved in T-cell development. Recombinant protein shows chemotactic activity on thymocytes, macrophages, THP-1 cells, and dendritic cells but is inactive on peripheral blood lymphocytes and neutrophils. Binds to CCR9. Isoform 2 is an antagonist of isoform 1. Binds to atypical chemokine receptor ACKR4 and mediates the recruitment of beta-arrestin (ARRB1/2) to ACKR4.

**Cellular Location**

Secreted.

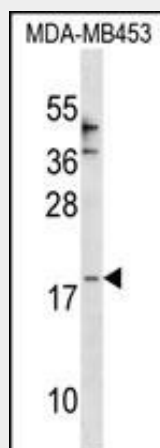
**Tissue Location**

Specifically expressed by thymic dendritic cells. High levels in thymus and small intestine

**CCL25 Antibody (Center) - Protocols**

Provided below are standard protocols that you may find useful for product applications.

- [Western Blot](#)
- [Blocking Peptides](#)
- [Dot Blot](#)
- [Immunohistochemistry](#)
- [Immunofluorescence](#)
- [Immunoprecipitation](#)
- [Flow Cytometry](#)
- [Cell Culture](#)

**CCL25 Antibody (Center) - Images**

CCL25 Antibody (Center) (Cat. #AP16140c) western blot analysis in MDA-MB453 cell line lysates (35ug/lane). This demonstrates the CCL25 antibody detected the CCL25 protein (arrow).

**CCL25 Antibody (Center) - Background**

This gene belongs to the subfamily of small cytokine CC genes. Cytokines are a family of secreted proteins involved in immunoregulatory and inflammatory processes. The CC cytokines are proteins characterized by two adjacent cysteines. The cytokine encoded by this gene displays chemotactic activity for dendritic cells, thymocytes, and activated macrophages but is inactive on

peripheral blood lymphocytes and neutrophils. The product of this gene binds to chemokine receptor CCR9.

#### **CCL25 Antibody (Center) - References**

Schuurhof, A., et al. *Pediatr. Pulmonol.* 45(6):608-613(2010)  
Davila, S., et al. *Genes Immun.* 11(3):232-238(2010)  
Wang, Y., et al. *Cell. Mol. Immunol.* 7(1):51-60(2010)  
Yokoyama, K., et al. *Nephron Clin Pract* 115 (4), C237-C243 (2010) :  
Siezen, C.L., et al. *Pediatr. Infect. Dis. J.* 28(4):333-335(2009)