

CACNB1 Antibody (C-term)
Affinity Purified Rabbit Polyclonal Antibody (Pab)
Catalog # AP16144b**Specification**

CACNB1 Antibody (C-term) - Product Information

Application	WB,E
Primary Accession	Q02641
Other Accession	Q9MZL7 , NP_954855.1 , NP_000714.3
Reactivity	Human
Predicted	Bovine
Host	Rabbit
Clonality	Polyclonal
Isotype	Rabbit IgG
Calculated MW	65714
Antigen Region	543-572

CACNB1 Antibody (C-term) - Additional Information**Gene ID** 782**Other Names**

Voltage-dependent L-type calcium channel subunit beta-1, CAB1, Calcium channel voltage-dependent subunit beta 1, CACNB1, CACNLB1

Target/Specificity

This CACNB1 antibody is generated from rabbits immunized with a KLH conjugated synthetic peptide between 543-572 amino acids from the C-terminal region of human CACNB1.

Dilution

WB~~1:1000

Format

Purified polyclonal antibody supplied in PBS with 0.09% (W/V) sodium azide. This antibody is purified through a protein A column, followed by peptide affinity purification.

Storage

Maintain refrigerated at 2-8°C for up to 2 weeks. For long term storage store at -20°C in small aliquots to prevent freeze-thaw cycles.

Precautions

CACNB1 Antibody (C-term) is for research use only and not for use in diagnostic or therapeutic procedures.

CACNB1 Antibody (C-term) - Protein Information**Name** CACNB1

Synonyms CACNLB1

Function Regulatory subunit of L-type calcium channels (PubMed:[1309651](#), PubMed:[8107964](#), PubMed:[15615847](#)). Regulates the activity of L-type calcium channels that contain CACNA1A as pore-forming subunit (By similarity). Regulates the activity of L-type calcium channels that contain CACNA1C as pore-forming subunit and increases the presence of the channel complex at the cell membrane (PubMed:[15615847](#)). Required for functional expression L-type calcium channels that contain CACNA1D as pore-forming subunit (PubMed:[1309651](#)). Regulates the activity of L-type calcium channels that contain CACNA1B as pore-forming subunit (PubMed:[8107964](#)).

Cellular Location

Cell membrane, sarcolemma; Peripheral membrane protein {ECO:0000250|UniProtKB:P19517}; Cytoplasmic side {ECO:0000250|UniProtKB:P19517}. Cell membrane; Peripheral membrane protein

Tissue Location

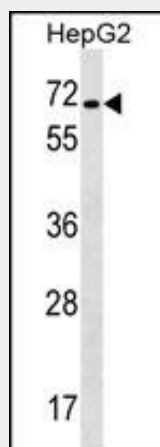
Detected in heart ventricle (at protein level) (PubMed:15615847). Isoform 1 and isoform 3 are expressed in brain, heart, spleen, central nervous system and neuroblastoma cells. Isoform 2 is expressed in skeletal muscle.

CACNB1 Antibody (C-term) - Protocols

Provided below are standard protocols that you may find useful for product applications.

- [Western Blot](#)
- [Blocking Peptides](#)
- [Dot Blot](#)
- [Immunohistochemistry](#)
- [Immunofluorescence](#)
- [Immunoprecipitation](#)
- [Flow Cytometry](#)
- [Cell Culture](#)

CACNB1 Antibody (C-term) - Images



CACNB1 Antibody (C-term) (Cat. #AP16144b) western blot analysis in HepG2 cell line lysates (35ug/lane). This demonstrates the CACNB1 antibody detected the CACNB1 protein (arrow).

CACNB1 Antibody (C-term) - Background

The protein encoded by this gene belongs to the calcium channel beta subunit family. It plays an important role in the calcium channel by modulating G protein inhibition, increasing peak calcium current, controlling the alpha-1 subunit membrane targeting and shifting the voltage dependence of activation and inactivation. Alternative splicing occurs at this locus and three transcript variants encoding three distinct isoforms have been identified.

CACNB1 Antibody (C-term) - References

Jangsangthong, W., et al. Pflugers Arch. 459(3):399-411(2010)
Olsen, J.V., et al. Cell 127(3):635-648(2006)
Olsen, J.V., et al. Cell 127(3):635-648(2006)
Lim, J., et al. Cell 125(4):801-814(2006)
Foell, J.D., et al. Physiol. Genomics 17(2):183-200(2004)