

Mouse Hoxb13 Antibody (Center)
Affinity Purified Rabbit Polyclonal Antibody (Pab)
Catalog # AP16151c**Specification**

Mouse Hoxb13 Antibody (Center) - Product Information

Application	WB,E
Primary Accession	P70321
Other Accession	NP_032293.1
Reactivity	Human
Host	Rabbit
Clonality	Polyclonal
Isotype	Rabbit IgG
Calculated MW	30963
Antigen Region	92-121

Mouse Hoxb13 Antibody (Center) - Additional Information**Gene ID** 15408**Other Names**

Homeobox protein Hox-B13, Hoxb13

Target/Specificity

This Mouse Hoxb13 antibody is generated from rabbits immunized with a KLH conjugated synthetic peptide between 92-121 amino acids from the Central region of mouse Hoxb13.

Dilution

WB~~1:1000

E~~Use at an assay dependent concentration.

Format

Purified polyclonal antibody supplied in PBS with 0.09% (W/V) sodium azide. This antibody is purified through a protein A column, followed by peptide affinity purification.

Storage

Maintain refrigerated at 2-8°C for up to 2 weeks. For long term storage store at -20°C in small aliquots to prevent freeze-thaw cycles.

Precautions

Mouse Hoxb13 Antibody (Center) is for research use only and not for use in diagnostic or therapeutic procedures.

Mouse Hoxb13 Antibody (Center) - Protein Information**Name** Hoxb13**Function** Sequence-specific transcription factor which is part of a developmental regulatory

system that provides cells with specific positional identities on the anterior-posterior axis. Binds preferentially to methylated DNA (By similarity).

Cellular Location

Nucleus.

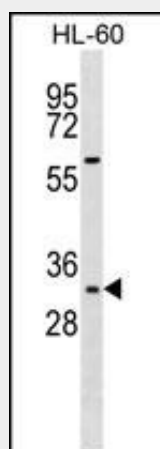
Tissue Location

Exhibits both spatial and temporal colinearity within the main body axis. At 12.5 dpc, is detected in hindgut, urogenital tract, spinal cord and tailbud. Not detected in secondary axes such as the limb and the genital tubercle

Mouse Hoxb13 Antibody (Center) - Protocols

Provided below are standard protocols that you may find useful for product applications.

- [Western Blot](#)
- [Blocking Peptides](#)
- [Dot Blot](#)
- [Immunohistochemistry](#)
- [Immunofluorescence](#)
- [Immunoprecipitation](#)
- [Flow Cytometry](#)
- [Cell Culture](#)

Mouse Hoxb13 Antibody (Center) - Images

Mouse Hoxb13 Antibody (Center) (Cat. #AP16151c) western blot analysis in HL-60 cell line lysates (35ug/lane). This demonstrates the Hoxb13 antibody detected the Hoxb13 protein (arrow).

Mouse Hoxb13 Antibody (Center) - Background

Sequence-specific transcription factor which is part of a developmental regulatory system that provides cells with specific positional identities on the anterior-posterior axis.

Mouse Hoxb13 Antibody (Center) - References

- Kang, X., et al. Mol. Cell 38(2):191-201(2010)
Mack, J.A., et al. J. Invest. Dermatol. 130(3):856-865(2010)
McMullin, R.P., et al. Proc. Natl. Acad. Sci. U.S.A. 107(1):98-103(2010)
Young, T., et al. Dev. Cell 17(4):516-526(2009)

Ezhkova, E., et al. Cell 136(6):1122-1135(2009)