

MSGN1 Antibody (Center)
Affinity Purified Rabbit Polyclonal Antibody (Pab)
Catalog # AP16154c**Specification**

MSGN1 Antibody (Center) - Product Information

Application	WB,E
Primary Accession	A6N15
Other Accession	NP_001099039.1
Reactivity	Human
Host	Rabbit
Clonality	Polyclonal
Isotype	Rabbit IgG
Calculated MW	20778
Antigen Region	97-125

MSGN1 Antibody (Center) - Additional Information**Gene ID** 343930**Other Names**

Mesogenin-1, Paraxial mesoderm-specific mesogenin1, pMesogenin1, pMsgn1, MSGN1

Target/Specificity

This MSGN1 antibody is generated from rabbits immunized with a KLH conjugated synthetic peptide between 97-125 amino acids from the Central region of human MSGN1.

Dilution

WB~~1:1000

E~~Use at an assay dependent concentration.

Format

Purified polyclonal antibody supplied in PBS with 0.09% (W/V) sodium azide. This antibody is purified through a protein A column, followed by peptide affinity purification.

Storage

Maintain refrigerated at 2-8°C for up to 2 weeks. For long term storage store at -20°C in small aliquots to prevent freeze-thaw cycles.

Precautions

MSGN1 Antibody (Center) is for research use only and not for use in diagnostic or therapeutic procedures.

MSGN1 Antibody (Center) - Protein Information**Name** MSGN1**Function** Involved in specifying the paraxial, but not dorsal, mesoderm. May regulate the

expression of T-box transcription factors required for mesoderm formation and differentiation (By similarity).

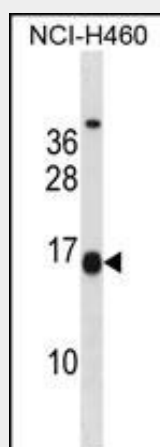
Cellular Location

Nucleus {ECO:0000255|PROSITE-ProRule:PRU00981}.

MSGN1 Antibody (Center) - Protocols

Provided below are standard protocols that you may find useful for product applications.

- [Western Blot](#)
- [Blocking Peptides](#)
- [Dot Blot](#)
- [Immunohistochemistry](#)
- [Immunofluorescence](#)
- [Immunoprecipitation](#)
- [Flow Cytometry](#)
- [Cell Culture](#)

MSGN1 Antibody (Center) - Images

MSGN1 Antibody (Center) (Cat. #AP16154c) western blot analysis in NCI-H460 cell line lysates (35ug/lane). This demonstrates the MSGN1 antibody detected the MSGN1 protein (arrow).

MSGN1 Antibody (Center) - Background

MSGN1 is involved in the formation and segmentation of paraxial mesoderm. Has the regulatory capacity to specify ventrolateral (including future paraxial), but not dorsal (future axial), mesoderm phenotypes. Seems to be an upstream regulator of at least some elements of the Notch and Delta signaling pathway (By similarity).

MSGN1 Antibody (Center) - References

Venter, J.C., et al. Science 291(5507):1304-1351(2001)
Yoon, J.K., et al. Dev. Biol. 222(2):376-391(2000)