

**CDKN2B Antibody (C-term)**  
**Affinity Purified Rabbit Polyclonal Antibody (Pab)**  
**Catalog # AP16165b****Specification**

---

**CDKN2B Antibody (C-term) - Product Information**

Application	IF, WB,E
Primary Accession	<a href="#">P42772</a>
Other Accession	<a href="#">NP_004927.2</a> , <a href="#">NP_511042.1</a>
Reactivity	Human
Host	Rabbit
Clonality	Polyclonal
Isotype	Rabbit IgG
Antigen Region	110-138

**CDKN2B Antibody (C-term) - Additional Information****Gene ID** 1030**Other Names**

Cyclin-dependent kinase 4 inhibitor B, Multiple tumor suppressor 2, MTS-2, p14-INK4b, p15-INK4b, p15INK4B, CDKN2B, MTS2

**Target/Specificity**

This CDKN2B antibody is generated from rabbits immunized with a KLH conjugated synthetic peptide between 110-138 amino acids from the C-terminal region of human CDKN2B.

**Dilution**

IF~~1:10~50

WB~~1:1000

E~~Use at an assay dependent concentration.

**Format**

Purified polyclonal antibody supplied in PBS with 0.09% (W/V) sodium azide. This antibody is purified through a protein A column, followed by peptide affinity purification.

**Storage**

Maintain refrigerated at 2-8°C for up to 2 weeks. For long term storage store at -20°C in small aliquots to prevent freeze-thaw cycles.

**Precautions**

CDKN2B Antibody (C-term) is for research use only and not for use in diagnostic or therapeutic procedures.

**CDKN2B Antibody (C-term) - Protein Information****Name** CDKN2B

**Synonyms** MTS2

**Function** Interacts strongly with CDK4 and CDK6. Potent inhibitor. Potential effector of TGF-beta induced cell cycle arrest.

**Cellular Location**

Cytoplasm. Note=Also found in the nucleus

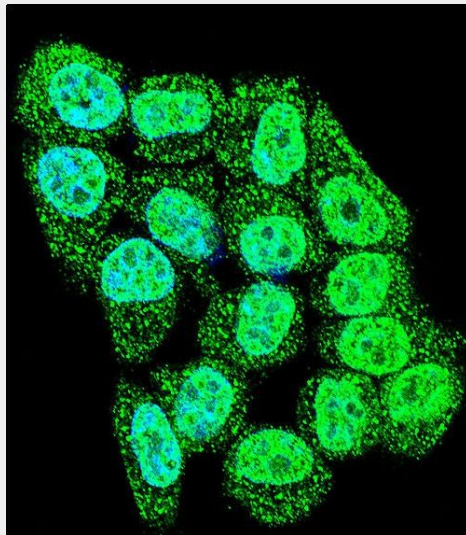
**Tissue Location**

Isoform 2 is expressed in normal (keratinocytes, fibroblasts) and tumor cell lines.

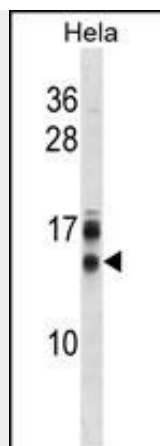
**CDKN2B Antibody (C-term) - Protocols**

Provided below are standard protocols that you may find useful for product applications.

- [Western Blot](#)
- [Blocking Peptides](#)
- [Dot Blot](#)
- [Immunohistochemistry](#)
- [Immunofluorescence](#)
- [Immunoprecipitation](#)
- [Flow Cytometry](#)
- [Cell Culture](#)

**CDKN2B Antibody (C-term) - Images**

Confocal immunofluorescent analysis of CDKN2B Antibody (C-term)(Cat#AP16165b) with HeLa cell followed by Alexa Fluor 488-conjugated goat anti-rabbit IgG (green). DAPI was used to stain the cell nuclear (blue).



CDKN2B Antibody (C-term) (Cat. #AP16165b) western blot analysis in HeLa cell line lysates (35ug/lane). This demonstrates the CDKN2B antibody detected the CDKN2B protein (arrow).

#### **CDKN2B Antibody (C-term) - Background**

This gene lies adjacent to the tumor suppressor gene CDKN2A in a region that is frequently mutated and deleted in a wide variety of tumors. This gene encodes a cyclin-dependent kinase inhibitor, which forms a complex with CDK4 or CDK6, and prevents the activation of the CDK kinases, thus the encoded protein functions as a cell growth regulator that controls cell cycle G1 progression. The expression of this gene was found to be dramatically induced by TGF beta, which suggested its role in the TGF beta induced growth inhibition. Two alternatively spliced transcript variants of this gene, which encode distinct proteins, have been reported.

#### **CDKN2B Antibody (C-term) - References**

Camacho, C.V., et al. Carcinogenesis 31(10):1889-1896(2010)  
Bailey, S.D., et al. Diabetes Care 33(10):2250-2253(2010)  
Pechlivanis, S., et al. Arterioscler. Thromb. Vasc. Biol. 30(9):1867-1872(2010)  
Heni, M., et al. Diabetes (2010) In press :  
Roder, C., et al. Childs Nerv Syst (2010) In press :