

**HOXB8 Antibody (C-term)**  
**Affinity Purified Rabbit Polyclonal Antibody (Pab)**  
**Catalog # AP16167b****Specification**

---

**HOXB8 Antibody (C-term) - Product Information**

|                   |                             |
|-------------------|-----------------------------|
| Application       | WB,E                        |
| Primary Accession | <a href="#">P17481</a>      |
| Other Accession   | <a href="#">NP_076921.1</a> |
| Reactivity        | Human                       |
| Host              | Rabbit                      |
| Clonality         | Polyclonal                  |
| Isotype           | Rabbit IgG                  |
| Calculated MW     | 27574                       |
| Antigen Region    | 215-243                     |

**HOXB8 Antibody (C-term) - Additional Information****Gene ID** 3218**Other Names**

Homeobox protein Hox-B8, Homeobox protein Hox-24, Homeobox protein Hox-2D, HOXB8, HOX2D

**Target/Specificity**

This HOXB8 antibody is generated from rabbits immunized with a KLH conjugated synthetic peptide between 215-243 amino acids from the C-terminal region of human HOXB8.

**Dilution**

WB~~1:1000

E~~Use at an assay dependent concentration.

**Format**

Purified polyclonal antibody supplied in PBS with 0.09% (W/V) sodium azide. This antibody is purified through a protein A column, followed by peptide affinity purification.

**Storage**

Maintain refrigerated at 2-8°C for up to 2 weeks. For long term storage store at -20°C in small aliquots to prevent freeze-thaw cycles.

**Precautions**

HOXB8 Antibody (C-term) is for research use only and not for use in diagnostic or therapeutic procedures.

**HOXB8 Antibody (C-term) - Protein Information****Name** HOXB8**Synonyms** HOX2D

**Function** Sequence-specific transcription factor which is part of a developmental regulatory system that provides cells with specific positional identities on the anterior-posterior axis.

**Cellular Location**

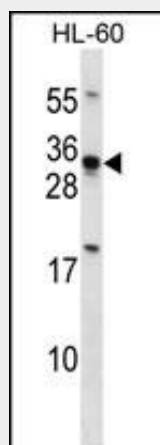
Nucleus.

**HOXB8 Antibody (C-term) - Protocols**

Provided below are standard protocols that you may find useful for product applications.

- [Western Blot](#)
- [Blocking Peptides](#)
- [Dot Blot](#)
- [Immunohistochemistry](#)
- [Immunofluorescence](#)
- [Immunoprecipitation](#)
- [Flow Cytometry](#)
- [Cell Culture](#)

**HOXB8 Antibody (C-term) - Images**



HOXB8 Antibody (C-term) (Cat. #AP16167b) western blot analysis in HL-60 cell line lysates (35ug/lane). This demonstrates the HOXB8 antibody detected the HOXB8 protein (arrow).

**HOXB8 Antibody (C-term) - Background**

This gene is a member of the Antp homeobox family and encodes a nuclear protein with a homeobox DNA-binding domain. It is included in a cluster of homeobox B genes located on chromosome 17. The encoded protein functions as a sequence-specific transcription factor that is involved in development. Increased expression of this gene is associated with colorectal cancer. Mice that have had the murine ortholog of this gene knocked out exhibit an excessive pathologic grooming behavior. This behavior is similar to the behavior of humans suffering from the obsessive-compulsive spectrum disorder trichotillomania.

**HOXB8 Antibody (C-term) - References**

Kosaki, K., et al. Teratology 65(2):50-62(2002)

Greer, J.M., et al. Neuron 33(1):23-34(2002)

Knoepfler, P.S., et al. Oncogene 20(39):5440-5448(2001)

Fujino, T., et al. Exp. Hematol. 29(7):856-863(2001)

Vider, B.Z., et al. Biochem. Biophys. Res. Commun. 232(3):742-748(1997)