

TTC23 Antibody (Center)
Affinity Purified Rabbit Polyclonal Antibody (Pab)
Catalog # AP16173c**Specification**

TTC23 Antibody (Center) - Product Information

Application	WB,E
Primary Accession	O5W5X9
Other Accession	NP_001035745.1 , NP_001035747.1 , NP_001035748.1
Reactivity	Human
Host	Rabbit
Clonality	Polyclonal
Isotype	Rabbit IgG
Calculated MW	50009
Antigen Region	137-165

TTC23 Antibody (Center) - Additional Information**Gene ID** 64927**Other Names**

Tetratricopeptide repeat protein 23, TPR repeat protein 23, Cervical cancer proto-oncogene 8 protein, HCC-8, TTC23

Target/Specificity

This TTC23 antibody is generated from rabbits immunized with a KLH conjugated synthetic peptide between 137-165 amino acids from the Central region of human TTC23.

Dilution

WB~~1:1000

E~~Use at an assay dependent concentration.

Format

Purified polyclonal antibody supplied in PBS with 0.09% (W/V) sodium azide. This antibody is purified through a protein A column, followed by peptide affinity purification.

Storage

Maintain refrigerated at 2-8°C for up to 2 weeks. For long term storage store at -20°C in small aliquots to prevent freeze-thaw cycles.

Precautions

TTC23 Antibody (Center) is for research use only and not for use in diagnostic or therapeutic procedures.

TTC23 Antibody (Center) - Protein Information**Name** TTC23

Function Participates positively in the ciliary Hedgehog (Hh) signaling.

Cellular Location

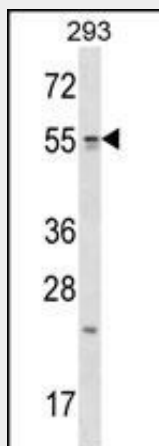
Cell projection, cilium {ECO:0000250|UniProtKB:Q8CHY7}. Note=Colocalizes with EVC and IQCE at the EvC zone of primary cilia. {ECO:0000250|UniProtKB:Q8CHY7}

TTC23 Antibody (Center) - Protocols

Provided below are standard protocols that you may find useful for product applications.

- [Western Blot](#)
- [Blocking Peptides](#)
- [Dot Blot](#)
- [Immunohistochemistry](#)
- [Immunofluorescence](#)
- [Immunoprecipitation](#)
- [Flow Cytometry](#)
- [Cell Culture](#)

TTC23 Antibody (Center) - Images



TTC23 Antibody (Center) (Cat. #AP16173c) western blot analysis in 293 cell line lysates (35ug/lane). This demonstrates the TTC23 antibody detected the TTC23 protein (arrow).

TTC23 Antibody (Center) - References

Karasik, D., et al. J. Bone Miner. Res. 25(7):1555-1563(2010)
Oh, J.H., et al. Mamm. Genome 16(12):942-954(2005)