

KRT28 Antibody (C-term)
Affinity Purified Rabbit Polyclonal Antibody (Pab)
Catalog # AP16179b**Specification**

KRT28 Antibody (C-term) - Product Information

Application	WB,E
Primary Accession	Q7Z3Y7
Other Accession	NP_853513.2
Reactivity	Human
Host	Rabbit
Clonality	Polyclonal
Isotype	Rabbit IgG
Calculated MW	50567
Antigen Region	432-460

KRT28 Antibody (C-term) - Additional Information**Gene ID** 162605**Other Names**

Keratin, type I cytoskeletal 28, Cytokeratin-28, CK-28, Keratin-25D, K25D, Keratin-28, K28, Type I inner root sheath-specific keratin-K25irs4, KRT28 (HGNC:30842)

Target/Specificity

This KRT28 antibody is generated from rabbits immunized with a KLH conjugated synthetic peptide between 432-460 amino acids from the C-terminal region of human KRT28.

Dilution

WB~~1:1000

E~~Use at an assay dependent concentration.

Format

Purified polyclonal antibody supplied in PBS with 0.09% (W/V) sodium azide. This antibody is purified through a protein A column, followed by peptide affinity purification.

Storage

Maintain refrigerated at 2-8°C for up to 2 weeks. For long term storage store at -20°C in small aliquots to prevent freeze-thaw cycles.

Precautions

KRT28 Antibody (C-term) is for research use only and not for use in diagnostic or therapeutic procedures.

KRT28 Antibody (C-term) - Protein Information

Name KRT28 ([HGNC:30842](#))

Function Essential for the proper assembly of types I and II keratin protein complexes and the formation of keratin intermediate filaments in the inner root sheath (irs).

Cellular Location

Cytoplasm {ECO:0000250|UniProtKB:A6BLY7}.

Tissue Location

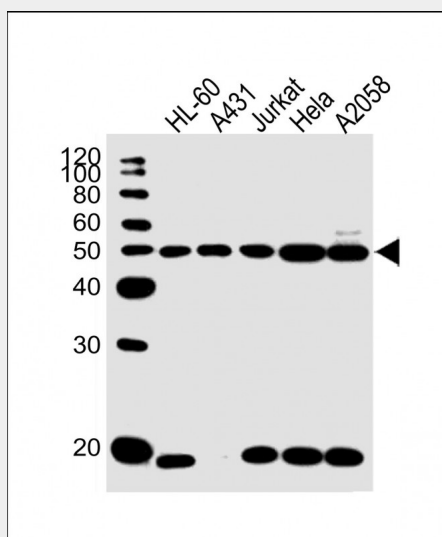
Strongly expressed in skin and scalp, and weak expression observed in thymus. In the hair follicle, expressed in Henle layer, Huxley layer and in the irs cuticle. Expression extends from the bulb region up to the point of differentiation into the three layers Also present in the medulla of beard hair (at protein level)

KRT28 Antibody (C-term) - Protocols

Provided below are standard protocols that you may find useful for product applications.

- [Western Blot](#)
- [Blocking Peptides](#)
- [Dot Blot](#)
- [Immunohistochemistry](#)
- [Immunofluorescence](#)
- [Immunoprecipitation](#)
- [Flow Cytometry](#)
- [Cell Culture](#)

KRT28 Antibody (C-term) - Images



All lanes : Anti-KRT28 Antibody (C-term) at 1:1000 dilution Lane 1: HL-60 whole cell lysate Lane 2: A431 whole cell lysate Lane 3: Jurkat whole cell lysate Lane 4: HeLa whole cell lysate Lane 5: A2058 whole cell lysate Lysates/proteins at 20 µg per lane. Secondary Goat Anti-Rabbit IgG, (H+L), Peroxidase conjugated at 1/10000 dilution. Predicted band size : 51 kDa Blocking/Dilution buffer: 5% NFDM/TBST.

KRT28 Antibody (C-term) - Background

This gene encodes a member of the type I (acidic) keratin family, which belongs to the superfamily of intermediate filament (IF) proteins. Keratins are heteropolymeric structural proteins which form the intermediate filament. These filaments, along with actin microfilaments and microtubules, compose the cytoskeleton of epithelial cells. The type I keratin genes are clustered in a region of chromosome 17q12-q21.

KRT28 Antibody (C-term) - References

Schweizer, J., et al. J. Cell Biol. 174(2):169-174(2006)
Rogers, M.A., et al. Differentiation 72 (9-10), 527-540 (2004) :