

SLC28A2 Antibody (N-term)
Affinity Purified Rabbit Polyclonal Antibody (Pab)
Catalog # AP16185a**Specification**

SLC28A2 Antibody (N-term) - Product Information

Application	WB,E
Primary Accession	O43868
Other Accession	NP_004203.2
Reactivity	Human
Host	Rabbit
Clonality	Polyclonal
Isotype	Rabbit IgG
Calculated MW	71926
Antigen Region	14-42

SLC28A2 Antibody (N-term) - Additional Information**Gene ID** 9153**Other Names**

Sodium/nucleoside cotransporter 2, Concentrative nucleoside transporter 2, CNT 2, hCNT2, Na(+)/nucleoside cotransporter 2, Sodium-coupled nucleoside transporter 2, Sodium/purine nucleoside co-transporter, SPNT, Solute carrier family 28 member 2, SLC28A2, CNT2

Target/Specificity

This SLC28A2 antibody is generated from rabbits immunized with a KLH conjugated synthetic peptide between 14-42 amino acids from the N-terminal region of human SLC28A2.

Dilution

WB~~1:1000

E~~Use at an assay dependent concentration.

Format

Purified polyclonal antibody supplied in PBS with 0.09% (W/V) sodium azide. This antibody is purified through a protein A column, followed by peptide affinity purification.

Storage

Maintain refrigerated at 2-8°C for up to 2 weeks. For long term storage store at -20°C in small aliquots to prevent freeze-thaw cycles.

Precautions

SLC28A2 Antibody (N-term) is for research use only and not for use in diagnostic or therapeutic procedures.

SLC28A2 Antibody (N-term) - Protein Information**Name** SLC28A2

Synonyms CNT2

Function Sodium-dependent and purine-selective transporter (PubMed:[10087507](#), PubMed:[9435697](#)). Exhibits the transport characteristics of the nucleoside transport system cif or N1 subtype (N1/cif) (selective for purine nucleosides and uridine) (PubMed:[10087507](#), PubMed:[21795683](#), PubMed:[9435697](#)). Plays a critical role in specific uptake and salvage of purine nucleosides in kidney and other tissues (PubMed:[9435697](#)). May contribute to regulate the transport of organic compounds in testes across the blood-testis- barrier (Probable).

Cellular Location

Membrane; Multi-pass membrane protein. Apicolateral cell membrane; Multi-pass membrane protein. Note=Localized to the apicolateral membranes of Sertoli cells and vascular endothelial cells in testis

Tissue Location

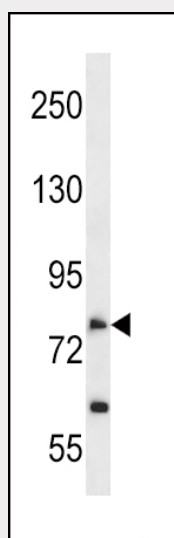
Expressed in heart and skeletal muscle followed by liver, kidney, intestine, pancreas, placenta and brain (PubMed:9435697). Weak expression in lung (PubMed:9435697). In testis, primarily localized to the apicolateral membranes of Sertoli cells and vascular endothelial cells, and weakly expressed in Leydig cells, peritubular myoid cells and germ cells (PubMed:35307651)

SLC28A2 Antibody (N-term) - Protocols

Provided below are standard protocols that you may find useful for product applications.

- [Western Blot](#)
- [Blocking Peptides](#)
- [Dot Blot](#)
- [Immunohistochemistry](#)
- [Immunofluorescence](#)
- [Immunoprecipitation](#)
- [Flow Cytometry](#)
- [Cell Culture](#)

SLC28A2 Antibody (N-term) - Images



SLC28A2 Antibody (N-term) (Cat. #AP16185a) western blot analysis in A549 cell line lysates (35ug/lane). This demonstrates the SLC28A2 antibody detected the SLC28A2 protein (arrow).

SLC28A2 Antibody (N-term) - Background

Sodium-dependent and purine-selective transporter. Exhibits the transport characteristics of the nucleoside transport system cif or N1 subtype (N1/cif) (selective for purine nucleosides and uridine). Plays a critical role in specific uptake and salvage of purine nucleosides in kidney and other tissues.