

RPS20 Antibody (N-term)
Affinity Purified Rabbit Polyclonal Antibody (Pab)
Catalog # AP16187a**Specification**

RPS20 Antibody (N-term) - Product Information

Application	WB,E
Primary Accession	P60866
Other Accession	P23403 , P60868 , A1XQU9 , P60867 , Q4R5D0 , Q3ZBH8 , NP_001014.1 , G1SIZ2
Reactivity	Human
Predicted	Bovine, Monkey, Mouse, Pig, Rabbit, Rat, Xenopus
Host	Rabbit
Clonality	Polyclonal
Isotype	Rabbit IgG
Calculated MW	13373
Antigen Region	26-55

RPS20 Antibody (N-term) - Additional Information**Gene ID** 6224**Other Names**

40S ribosomal protein S20, RPS20

Target/Specificity

This RPS20 antibody is generated from rabbits immunized with a KLH conjugated synthetic peptide between 26-55 amino acids from the N-terminal region of human RPS20.

Dilution

WB~~1:1000

E~~Use at an assay dependent concentration.

Format

Purified polyclonal antibody supplied in PBS with 0.09% (W/V) sodium azide. This antibody is purified through a protein A column, followed by peptide affinity purification.

Storage

Maintain refrigerated at 2-8°C for up to 2 weeks. For long term storage store at -20°C in small aliquots to prevent freeze-thaw cycles.

Precautions

RPS20 Antibody (N-term) is for research use only and not for use in diagnostic or therapeutic procedures.

RPS20 Antibody (N-term) - Protein Information

Name RPS20

Function Component of the small ribosomal subunit (PubMed:[23636399](#)). The ribosome is a large ribonucleoprotein complex responsible for the synthesis of proteins in the cell (PubMed:[23636399](#)).

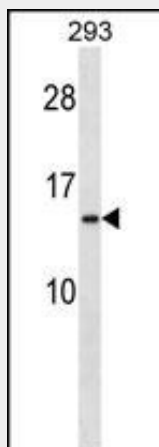
Cellular Location

Cytoplasm.

RPS20 Antibody (N-term) - Protocols

Provided below are standard protocols that you may find useful for product applications.

- [Western Blot](#)
- [Blocking Peptides](#)
- [Dot Blot](#)
- [Immunohistochemistry](#)
- [Immunofluorescence](#)
- [Immunoprecipitation](#)
- [Flow Cytometry](#)
- [Cell Culture](#)

RPS20 Antibody (N-term) - Images

RPS20 Antibody (N-term) (Cat. #AP16187a) western blot analysis in 293 cell line lysates (35ug/lane). This demonstrates the RPS20 antibody detected the RPS20 protein (arrow).

RPS20 Antibody (N-term) - Background

Ribosomes, the organelles that catalyze protein synthesis, consist of a small 40S subunit and a large 60S subunit. Together these subunits are composed of 4 RNA species and approximately 80 structurally distinct proteins. This gene encodes a ribosomal protein that is a component of the 40S subunit. The protein belongs to the S10P family of ribosomal proteins. It is located in the cytoplasm. This gene is co-transcribed with the small nucleolar RNA gene U54, which is located in its second intron. As is typical for genes encoding ribosomal proteins, there are multiple processed pseudogenes of this gene dispersed through the genome. Two transcript variants encoding different isoforms have been

identified for this gene.

RPS20 Antibody (N-term) - References

Zhao, J., et al. BMC Med. Genet. 11, 96 (2010) :
Sugiyama, N., et al. Mol. Cell Proteomics 6(6):1103-1109(2007)
Frum, R., et al. J. Proteome Res. 6(4):1410-1417(2007)
Wang, A.G., et al. Biochem. Biophys. Res. Commun. 345(3):1022-1032(2006)
De Bortoli, M., et al. BMC Cancer 6, 223 (2006) :