

**STXBP2 Antibody (C-term)**  
**Affinity Purified Rabbit Polyclonal Antibody (Pab)**  
**Catalog # AP16191b****Specification**

---

**STXBP2 Antibody (C-term) - Product Information**

Application	WB,E
Primary Accession	<a href="#">Q15833</a>
Reactivity	Human
Host	Rabbit
Clonality	Polyclonal
Isotype	Rabbit IgG
Calculated MW	66453
Antigen Region	440-469

**STXBP2 Antibody (C-term) - Additional Information****Gene ID** 6813**Other Names**

Syntaxin-binding protein 2, Protein unc-18 homolog 2, Unc18-2, Protein unc-18 homolog B, Unc-18B, STXBP2, UNC18B

**Target/Specificity**

This STXBP2 antibody is generated from rabbits immunized with a KLH conjugated synthetic peptide between 440-469 amino acids from the C-terminal region of human STXBP2.

**Dilution**

WB~~1:1000

E~~Use at an assay dependent concentration.

**Format**

Purified polyclonal antibody supplied in PBS with 0.09% (W/V) sodium azide. This antibody is purified through a protein A column, followed by peptide affinity purification.

**Storage**

Maintain refrigerated at 2-8°C for up to 2 weeks. For long term storage store at -20°C in small aliquots to prevent freeze-thaw cycles.

**Precautions**

STXBP2 Antibody (C-term) is for research use only and not for use in diagnostic or therapeutic procedures.

**STXBP2 Antibody (C-term) - Protein Information****Name** STXBP2**Synonyms** UNC18B

**Function** Involved in intracellular vesicle trafficking and vesicle fusion with membranes. Contributes to the granule exocytosis machinery through interaction with soluble N-ethylmaleimide-sensitive factor attachment protein receptor (SNARE) proteins that regulate membrane fusion. Regulates cytotoxic granule exocytosis in natural killer (NK) cells.

**Tissue Location**

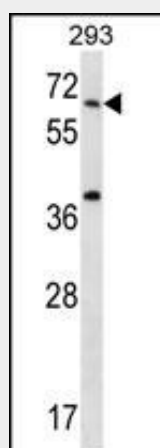
Placenta, lung, liver, kidney and pancreas, as well as in peripheral blood lymphocytes

**STXBP2 Antibody (C-term) - Protocols**

Provided below are standard protocols that you may find useful for product applications.

- [Western Blot](#)
- [Blocking Peptides](#)
- [Dot Blot](#)
- [Immunohistochemistry](#)
- [Immunofluorescence](#)
- [Immunoprecipitation](#)
- [Flow Cytometry](#)
- [Cell Culture](#)

**STXBP2 Antibody (C-term) - Images**



STXBP2 Antibody (C-term) (Cat. #AP16191b) western blot analysis in 293 cell line lysates (35ug/lane). This demonstrates the STXBP2 antibody detected the STXBP2 protein (arrow).

**STXBP2 Antibody (C-term) - Background**

STXBP2 is involved in intracellular vesicle trafficking and vesicle fusion with membranes. Contributes to the granule exocytosis machinery through interaction with soluble N-ethylmaleimide-sensitive factor attachment protein receptor (SNARE) proteins that regulate membrane fusion. Regulates cytotoxic granule exocytosis in natural killer (NK) cells.