

**C1RL Antibody (Center)**  
**Affinity Purified Rabbit Polyclonal Antibody (Pab)**  
**Catalog # AP16193c****Specification**

---

**C1RL Antibody (Center) - Product Information**

Application	WB,E
Primary Accession	<a href="#">O9NZP8</a>
Other Accession	<a href="#">NP_057630.2</a>
Reactivity	Human
Host	Rabbit
Clonality	Polyclonal
Isotype	Rabbit IgG
Calculated MW	53498
Antigen Region	161-190

**C1RL Antibody (Center) - Additional Information****Gene ID** 51279**Other Names**

Complement C1r subcomponent-like protein, C1r-LP, C1r-like protein, 3421-, C1r-like serine protease analog protein, CLSPa, C1RL, C1RL1, C1RLP, CLSPA

**Target/Specificity**

This C1RL antibody is generated from rabbits immunized with a KLH conjugated synthetic peptide between 161-190 amino acids from the Central region of human C1RL.

**Dilution**

WB~~1:1000

E~~Use at an assay dependent concentration.

**Format**

Purified polyclonal antibody supplied in PBS with 0.09% (W/V) sodium azide. This antibody is purified through a protein A column, followed by peptide affinity purification.

**Storage**

Maintain refrigerated at 2-8°C for up to 2 weeks. For long term storage store at -20°C in small aliquots to prevent freeze-thaw cycles.

**Precautions**

C1RL Antibody (Center) is for research use only and not for use in diagnostic or therapeutic procedures.

**C1RL Antibody (Center) - Protein Information****Name** C1RL

**Synonyms** C1RL1, C1RLP, CLSPA

**Function** Mediates the proteolytic cleavage of HP/haptoglobin in the endoplasmic reticulum.

**Cellular Location**  
Secreted.

**Tissue Location**

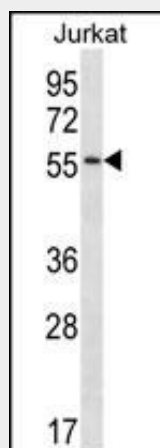
Highly expressed in placenta, liver, kidney, pancreas, moderately in lung, spleen, prostate, ovary, colon, and PBL, and weakly in heart, skeletal muscle, thymus, testis, and small intestine. Expressed in PC-3 (prostate adenocarcinoma) and SK-OV-3 (ovary adenocarcinoma) cells, but not in LoVo and HT-29 (colon adenocarcinoma), SMMC7721 (hepatocellular carcinoma), CaoV-3 (ovary adenocarcinoma), HeLa (cervix epithelioid carcinoma), MCF-7 (breast adenocarcinoma), U-251MG (glioma) or A-549 (lung carcinoma) cells. Widely expressed in myeloid leukemia cell lines, including K-562 (chronic myelogenous leukemia), THP-1 (myelomonocytic leukemia), HL-60 and NB4 (promyelocytic leukemia), and KG-1 (acute myelogenous leukemia) cells. Expressed mainly in the liver and in serum (at protein level)

**C1RL Antibody (Center) - Protocols**

Provided below are standard protocols that you may find useful for product applications.

- [Western Blot](#)
- [Blocking Peptides](#)
- [Dot Blot](#)
- [Immunohistochemistry](#)
- [Immunofluorescence](#)
- [Immunoprecipitation](#)
- [Flow Cytometry](#)
- [Cell Culture](#)

**C1RL Antibody (Center) - Images**



C1RL Antibody (Center) (Cat. #AP16193c) western blot analysis in Jurkat cell line lysates (35ug/lane). This demonstrates the C1RL antibody detected the C1RL protein (arrow).

**C1RL Antibody (Center) - Background**

C1RL mediates the proteolytic cleavage of HP/haptoglobin in the endoplasmic reticulum.