

**ARHGAP36 Antibody (C-term)**  
**Affinity Purified Rabbit Polyclonal Antibody (Pab)**  
**Catalog # AP16204b****Specification**

---

**ARHGAP36 Antibody (C-term) - Product Information**

Application	WB,E
Primary Accession	<a href="#">Q6ZRI8</a>
Other Accession	<a href="#">NP_659404.2</a>
Reactivity	Human
Host	Rabbit
Clonality	Polyclonal
Isotype	Rabbit IgG
Antigen Region	13-102

**ARHGAP36 Antibody (C-term) - Additional Information****Gene ID** 158763**Other Names**

Rho GTPase-activating protein 36, ARHGAP36

**Target/Specificity**

This RP13-102H20.1/ARHGAP36 antibody is generated from rabbits immunized with a KLH conjugated synthetic peptide between 373-402 amino acids from the C-terminal region of human RP13-102H20.1/ARHGAP36.

**Dilution**

WB~~1:1000

E~~Use at an assay dependent concentration.

**Format**

Purified polyclonal antibody supplied in PBS with 0.09% (W/V) sodium azide. This antibody is purified through a protein A column, followed by peptide affinity purification.

**Storage**

Maintain refrigerated at 2-8°C for up to 2 weeks. For long term storage store at -20°C in small aliquots to prevent freeze-thaw cycles.

**Precautions**

ARHGAP36 Antibody (C-term) is for research use only and not for use in diagnostic or therapeutic procedures.

**ARHGAP36 Antibody (C-term) - Protein Information****Name** ARHGAP36**Function** GTPase activator for the Rho-type GTPases by converting them to an inactive

GDP-bound state.

#### Tissue Location

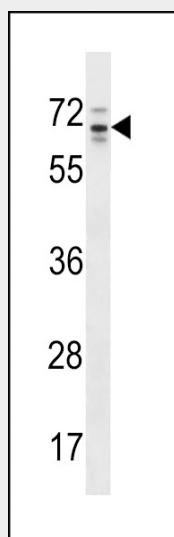
Detected in the outer root sheath of hair follicles at the level of the stem cell bulge, during the anagen and telogen phases of hair growth (at protein level)

#### ARHGAP36 Antibody (C-term) - Protocols

Provided below are standard protocols that you may find useful for product applications.

- [Western Blot](#)
- [Blocking Peptides](#)
- [Dot Blot](#)
- [Immunohistochemistry](#)
- [Immunofluorescence](#)
- [Immunoprecipitation](#)
- [Flow Cytometry](#)
- [Cell Culture](#)

#### ARHGAP36 Antibody (C-term) - Images



RP13-102H20.1/ARHGAP36 Antibody (C-term) (Cat. #AP16204b) western blot analysis in HepG2 cell line lysates (35ug/lane). This demonstrates the RP13-102H20.1 antibody detected the RP13-102H20.1 protein (arrow).

#### ARHGAP36 Antibody (C-term) - Background

GTPase activator for the Rho-type GTPases by converting them to an inactive GDP-bound state (By similarity).

#### ARHGAP36 Antibody (C-term) - References

Ross, M.T., et al. Nature 434(7031):325-337(2005)