

LIM2 Antibody (C-term)
Affinity Purified Rabbit Polyclonal Antibody (Pab)
Catalog # AP16239b**Specification**

LIM2 Antibody (C-term) - Product Information

Application	WB,E
Primary Accession	P55344
Other Accession	P54825 , P56563 , P20274 , NP_085915.2 , NP_001155220.1
Reactivity	Human
Predicted	Bovine, Mouse, Rat
Host	Rabbit
Clonality	Polyclonal
Isotype	Rabbit IgG
Calculated MW	19674
Antigen Region	110-137

LIM2 Antibody (C-term) - Additional Information**Gene ID** 3982**Other Names**

Lens fiber membrane intrinsic protein, MP18, MP19, MP20, LIM2

Target/Specificity

This LIM2 antibody is generated from rabbits immunized with a KLH conjugated synthetic peptide between 110-137 amino acids from the C-terminal region of human LIM2.

Dilution

WB~~1:1000

Format

Purified polyclonal antibody supplied in PBS with 0.09% (W/V) sodium azide. This antibody is purified through a protein A column, followed by peptide affinity purification.

Storage

Maintain refrigerated at 2-8°C for up to 2 weeks. For long term storage store at -20°C in small aliquots to prevent freeze-thaw cycles.

Precautions

LIM2 Antibody (C-term) is for research use only and not for use in diagnostic or therapeutic procedures.

LIM2 Antibody (C-term) - Protein Information**Name** LIM2

Function Present in the thicker 16-17 nm junctions of mammalian lens fiber cells, where it may contribute to cell junctional organization. Acts as a receptor for calmodulin. May play an important role in both lens development and cataractogenesis.

Cellular Location

Membrane; Multi-pass membrane protein.

Tissue Location

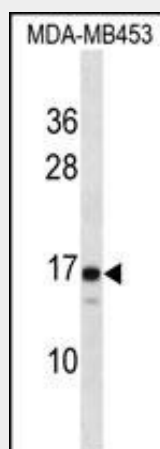
Eye lens specific..

LIM2 Antibody (C-term) - Protocols

Provided below are standard protocols that you may find useful for product applications.

- [Western Blot](#)
- [Blocking Peptides](#)
- [Dot Blot](#)
- [Immunohistochemistry](#)
- [Immunofluorescence](#)
- [Immunoprecipitation](#)
- [Flow Cytometry](#)
- [Cell Culture](#)

LIM2 Antibody (C-term) - Images



LIM2 Antibody (C-term) (Cat. #AP16239b) western blot analysis in MDA-MB453 cell line lysates (35ug/lane). This demonstrates the LIM2 antibody detected the LIM2 protein (arrow).

LIM2 Antibody (C-term) - Background

LIM2 is an eye lens-specific protein found at the junctions of lens fiber cells, where it may contribute to cell junctional organization. It acts as a receptor for calmodulin, and may play an important role in both lens development and cataractogenesis. Mutations in this gene have been associated with cataract formation.

LIM2 Antibody (C-term) - References

Ponnam, S.P., et al. Mol. Vis. 14, 1204-1208 (2008) :

Hsu, H., et al. Sheng Wu Gong Cheng Xue Bao 20(4):507-515(2004)

Wistow, G., et al. Mol. Vis. 8, 171-184 (2002) :

Wistow, G., et al. Mol. Vis. 8, 185-195 (2002) :

Pras, E., et al. Am. J. Hum. Genet. 70(5):1363-1367(2002)