

**SIGLEC5 Antibody (N-term)**  
**Purified Rabbit Polyclonal Antibody (Pab)**  
**Catalog # AP1623a****Specification**

---

**SIGLEC5 Antibody (N-term) - Product Information**

Application	WB, IHC-P,E
Primary Accession	<a href="#">O15389</a>
Reactivity	Human, Mouse
Host	Rabbit
Clonality	Polyclonal
Isotype	Rabbit IgG
Calculated MW	60715
Antigen Region	8-39

**SIGLEC5 Antibody (N-term) - Additional Information****Gene ID** 8778**Other Names**

Sialic acid-binding Ig-like lectin 5, Siglec-5, CD33 antigen-like 2, Obesity-binding protein 2, OB-BP2, OB-binding protein 2, CD170, SIGLEC5, CD33L2, OBBP2

**Target/Specificity**

This SIGLEC5 antibody is generated from rabbits immunized with a KLH conjugated synthetic peptide between 8-39 amino acids from the N-terminal region of human SIGLEC5.

**Dilution**

WB~~1:1000  
IHC-P~~1:50~100

**Format**

Purified polyclonal antibody supplied in PBS with 0.09% (W/V) sodium azide. This antibody is prepared by Saturated Ammonium Sulfate (SAS) precipitation followed by dialysis against PBS.

**Storage**

Maintain refrigerated at 2-8°C for up to 2 weeks. For long term storage store at -20°C in small aliquots to prevent freeze-thaw cycles.

**Precautions**

SIGLEC5 Antibody (N-term) is for research use only and not for use in diagnostic or therapeutic procedures.

**SIGLEC5 Antibody (N-term) - Protein Information****Name** SIGLEC5**Synonyms** CD33L2, OBBP2

**Function** Putative adhesion molecule that mediates sialic-acid dependent binding to cells. Binds equally to alpha-2,3-linked and alpha-2,6-linked sialic acid. The sialic acid recognition site may be masked by cis interactions with sialic acids on the same cell surface.

**Cellular Location**

Membrane; Single-pass type I membrane protein.

**Tissue Location**

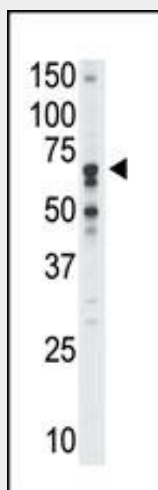
Expressed by monocytic/myeloid lineage cells. Found at high levels in peripheral blood leukocytes, spleen, bone marrow and at lower levels in lymph node, lung, appendix, placenta, pancreas and thymus. Expressed by monocytes and neutrophils but absent from leukemic cell lines representing early stages of myelomonocytic differentiation

**SIGLEC5 Antibody (N-term) - Protocols**

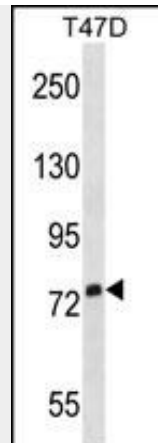
Provided below are standard protocols that you may find useful for product applications.

- [Western Blot](#)
- [Blocking Peptides](#)
- [Dot Blot](#)
- [Immunohistochemistry](#)
- [Immunofluorescence](#)
- [Immunoprecipitation](#)
- [Flow Cytometry](#)
- [Cell Culture](#)

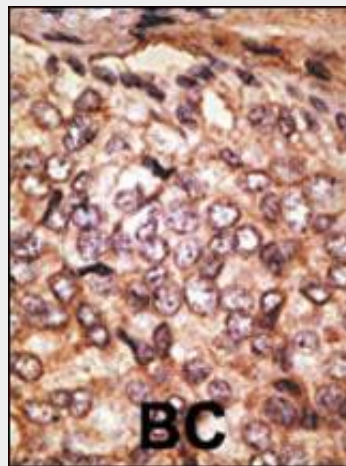
**SIGLEC5 Antibody (N-term) - Images**



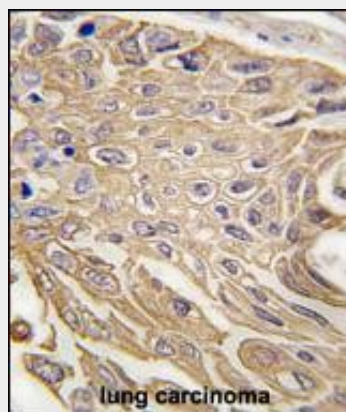
The anti-Siglec5 N-term Pab (Cat. #AP1623a) is used in Western blot to detect Siglec5 in mouse liver tissue lysate.



SIGLEC5 Antibody (S23) (Cat. #AP1623a) western blot analysis in T47D cell line lysates (35ug/lane). This demonstrates the SIGLEC5 antibody detected the SIGLEC5 protein (arrow).



Formalin-fixed and paraffin-embedded human cancer tissue reacted with the primary antibody, which was peroxidase-conjugated to the secondary antibody, followed by DAB staining. This data demonstrates the use of this antibody for immunohistochemistry; clinical relevance has not been evaluated. BC = breast carcinoma; HC = hepatocarcinoma.



Formalin-fixed and paraffin-embedded human lung carcinoma tissue reacted with SIGLEC5 Antibody (N-term) (Cat.#AP1623a), which was peroxidase-conjugated to the secondary antibody, followed by DAB staining. This data demonstrates the use of this antibody for immunohistochemistry; clinical relevance has not been evaluated.

#### **SIGLEC5 Antibody (N-term) - Background**

SIGLEC5 is a putative adhesion molecule that mediates sialic-acid dependent binding to cells. This protein binds equally to alpha2,3-linked and alpha2,6-linked sialic acid. The sialic acid recognition site may be masked by cis interactions with sialic acids on the same cell surface. This molecule is expressed by monocytic/myeloid lineage cells. SIGLEC5 is found at high levels in peripheral blood leukocytes, spleen, bone marrow and at lower levels in lymph node, lung, appendix, placenta, pancreas and thymus. It is expressed by monocytes and neutrophils but absent from leukemic cell lines representing early stages of myelomonocytic differentiation.

#### **SIGLEC5 Antibody (N-term) - References**

Erickson-Miller, C.L., et al., Exp. Hematol. 31(5):382-388 (2003).  
Patel, N., et al., J. Biol. Chem. 274(32):22729-22738 (1999).  
Cornish, A.L., et al., Blood 92(6):2123-2132 (1998).  
Kim, H.S., Cytogenet. Cell Genet. 84 (1-2), 96 (1999).