

**STEAP3 Antibody (C-term)**  
**Affinity Purified Rabbit Polyclonal Antibody (Pab)**  
**Catalog # AP16241b****Specification**

---

**STEAP3 Antibody (C-term) - Product Information**

Application	WB,E
Primary Accession	<a href="#">Q658P3</a>
Other Accession	<a href="#">NP_001008410.1</a> , <a href="#">NP_878919.2</a>
Reactivity	Human
Host	Rabbit
Clonality	Polyclonal
Isotype	Rabbit IgG
Calculated MW	54601
Antigen Region	441-470

**STEAP3 Antibody (C-term) - Additional Information****Gene ID** 55240**Other Names**

Metalloreductase STEAP3, 1161-, Dudulin-2, Six-transmembrane epithelial antigen of prostate 3, Tumor suppressor-activated pathway protein 6, hTSAP6, pHyde, hpHyde, STEAP3, TSAP6

**Target/Specificity**

This STEAP3 antibody is generated from rabbits immunized with a KLH conjugated synthetic peptide between 441-470 amino acids from the C-terminal region of human STEAP3.

**Dilution**

WB~~1:1000

**Format**

Purified polyclonal antibody supplied in PBS with 0.09% (W/V) sodium azide. This antibody is purified through a protein A column, followed by peptide affinity purification.

**Storage**

Maintain refrigerated at 2-8°C for up to 2 weeks. For long term storage store at -20°C in small aliquots to prevent freeze-thaw cycles.

**Precautions**

STEAP3 Antibody (C-term) is for research use only and not for use in diagnostic or therapeutic procedures.

**STEAP3 Antibody (C-term) - Protein Information****Name** STEAP3**Synonyms** TSAP6

**Function** Integral membrane protein that functions as a NADPH-dependent ferric-chelate reductase, using NADPH from one side of the membrane to reduce a Fe(3+) chelate that is bound on the other side of the membrane (PubMed:[26205815](#)). Mediates sequential transmembrane electron transfer from NADPH to FAD and onto heme, and finally to the Fe(3+) chelate (By similarity). Can also reduce Cu(2+) to Cu(1+) (By similarity). Mediates efficient transferrin-dependent iron uptake in erythroid cells (By similarity). May play a role downstream of p53/TP53 to interface apoptosis and cell cycle progression (By similarity). Indirectly involved in exosome secretion by facilitating the secretion of proteins such as TCTP (PubMed:[15319436](#), PubMed:[16651434](#)).

#### Cellular Location

Endosome membrane {ECO:0000250|UniProtKB:Q8CI59}; Multi-pass membrane protein.  
Note=Localizes to vesicular- like structures at the plasma membrane and around the nucleus

#### Tissue Location

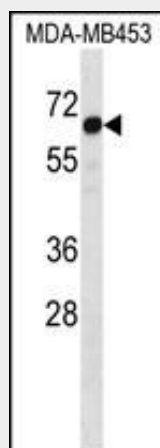
Expressed in adult bone marrow, placenta, liver, skeletal muscle and pancreas. Down-regulated in hepatocellular carcinoma.

### STEAP3 Antibody (C-term) - Protocols

Provided below are standard protocols that you may find useful for product applications.

- [Western Blot](#)
- [Blocking Peptides](#)
- [Dot Blot](#)
- [Immunohistochemistry](#)
- [Immunofluorescence](#)
- [Immunoprecipitation](#)
- [Flow Cytometry](#)
- [Cell Culture](#)

### STEAP3 Antibody (C-term) - Images



STEAP3 Antibody (C-term) (Cat. #AP16241b) western blot analysis in MDA-MB453 cell line lysates (35ug/lane). This demonstrates the STEAP3 antibody detected the STEAP3 protein (arrow).

### STEAP3 Antibody (C-term) - Background

Endosomal ferrireductase required for efficient transferrin-dependent iron uptake in erythroid cells. Participates in erythroid iron homeostasis by reducing Fe(3+) to Fe(2+). Can also reduce of Cu(2+)

to Cu(1+), suggesting that it participates in copper homeostasis. Uses NAD(+) as acceptor (By similarity). May play a role downstream of p53/TP53 to interface apoptosis and cell cycle progression. Indirectly involved in exosome secretion by facilitating the secretion of proteins such as TCTP.

#### **STEAP3 Antibody (C-term) - References**

Ucisik-Akkaya, E., et al. Mol. Hum. Reprod. 16(10):770-777(2010)  
Rose, J.E., et al. Mol. Med. 16 (7-8), 247-253 (2010) :  
Caillot, F., et al. Histopathology 54(3):319-327(2009)  
Sendamarai, A.K., et al. Proc. Natl. Acad. Sci. U.S.A. 105(21):7410-7415(2008)  
Olsen, J.V., et al. Cell 127(3):635-648(2006)