

**CENPC1 Antibody (Center)**  
**Affinity Purified Rabbit Polyclonal Antibody (Pab)**  
**Catalog # AP16246c****Specification**

---

**CENPC1 Antibody (Center) - Product Information**

Application	WB,E
Primary Accession	<a href="#">Q03188</a>
Other Accession	<a href="#">NP_001803.2</a>
Reactivity	Human
Host	Rabbit
Clonality	Polyclonal
Isotype	Rabbit IgG
Calculated MW	106834
Antigen Region	395-424

**CENPC1 Antibody (Center) - Additional Information****Gene ID** 1060**Other Names**

Centromere protein C, CENP-C, Centromere autoantigen C, Centromere protein C 1, CENP-C 1, Interphase centromere complex protein 7, CENPC, CENPC1, ICEN7

**Target/Specificity**

This CENPC1 antibody is generated from rabbits immunized with a KLH conjugated synthetic peptide between 395-424 amino acids from the Central region of human CENPC1.

**Dilution**

WB~~1:1000

E~~Use at an assay dependent concentration.

**Format**

Purified polyclonal antibody supplied in PBS with 0.09% (W/V) sodium azide. This antibody is purified through a protein A column, followed by peptide affinity purification.

**Storage**

Maintain refrigerated at 2-8°C for up to 2 weeks. For long term storage store at -20°C in small aliquots to prevent freeze-thaw cycles.

**Precautions**

CENPC1 Antibody (Center) is for research use only and not for use in diagnostic or therapeutic procedures.

**CENPC1 Antibody (Center) - Protein Information****Name** CENPC

**Synonyms** CENPC1, ICEN7

**Function** Component of the CENPA-NAC (nucleosome-associated) complex, a complex that plays a central role in assembly of kinetochore proteins, mitotic progression and chromosome segregation. The CENPA-NAC complex recruits the CENPA-CAD (nucleosome distal) complex and may be involved in incorporation of newly synthesized CENPA into centromeres. CENPC recruits DNA methylation and DNMT3B to both centromeric and pericentromeric satellite repeats and regulates the histone code in these regions.

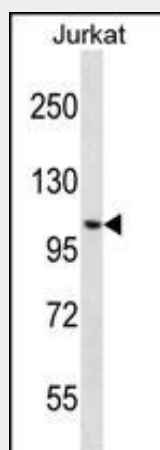
**Cellular Location**

Nucleus. Chromosome, centromere, kinetochore. Chromosome, centromere. Note=Localizes exclusively in the kinetochore domain of centromeres.

**CENPC1 Antibody (Center) - Protocols**

Provided below are standard protocols that you may find useful for product applications.

- [Western Blot](#)
- [Blocking Peptides](#)
- [Dot Blot](#)
- [Immunohistochemistry](#)
- [Immunofluorescence](#)
- [Immunoprecipitation](#)
- [Flow Cytometry](#)
- [Cell Culture](#)

**CENPC1 Antibody (Center) - Images**

CENPC1 Antibody (Center) (Cat. #AP16246c) western blot analysis in Jurkat cell line lysates (35ug/lane). This demonstrates the CENPC1 antibody detected the CENPC1 protein (arrow).

**CENPC1 Antibody (Center) - Background**

Centromere protein C 1 is a centromere autoantigen and a component of the inner kinetochore plate. The protein is required for maintaining proper kinetochore size and a timely transition to anaphase. A putative pseudogene exists on chromosome 12. [provided by RefSeq].

**CENPC1 Antibody (Center) - References**

Gopalakrishnan, S., et al. Hum. Mol. Genet. 18(17):3178-3193(2009)  
Yosifova, A., et al. J Affect Disord 117 (1-2), 87-97 (2009) :  
Baranzini, S.E., et al. Hum. Mol. Genet. 18(4):767-778(2009)  
Trazzi, S., et al. PLoS ONE 4 (6), E5832 (2009) :  
Seshadri, S., et al. BMC Med. Genet. 8 SUPPL 1, S15 (2007) :