

SIGLEC6 Antibody (N-term)
Purified Rabbit Polyclonal Antibody (Pab)
Catalog # AP1624a**Specification**

SIGLEC6 Antibody (N-term) - Product Information

Application	WB,E
Primary Accession	O43699
Reactivity	Human
Host	Rabbit
Clonality	Polyclonal
Isotype	Rabbit IgG
Calculated MW	49913
Antigen Region	10-40

SIGLEC6 Antibody (N-term) - Additional Information**Gene ID** 946**Other Names**

Sialic acid-binding Ig-like lectin 6, Siglec-6, CD33 antigen-like 1, CDw327, Obesity-binding protein 1, OB-BP1, CD327, SIGLEC6, CD33L, CD33L1, OBBP1

Target/Specificity

This SIGLEC6 antibody is generated from rabbits immunized with a KLH conjugated synthetic peptide between 10-40 amino acids from the N-terminal region of human SIGLEC6.

Dilution

WB~~1:1000

E~~Use at an assay dependent concentration.

Format

Purified polyclonal antibody supplied in PBS with 0.09% (W/V) sodium azide. This antibody is prepared by Saturated Ammonium Sulfate (SAS) precipitation followed by dialysis against PBS.

Storage

Maintain refrigerated at 2-8°C for up to 2 weeks. For long term storage store at -20°C in small aliquots to prevent freeze-thaw cycles.

Precautions

SIGLEC6 Antibody (N-term) is for research use only and not for use in diagnostic or therapeutic procedures.

SIGLEC6 Antibody (N-term) - Protein Information**Name** SIGLEC6**Synonyms** CD33L, CD33L1, OBBP1

Function Putative adhesion molecule that mediates sialic-acid dependent binding to cells. Binds to alpha-2,6-linked sialic acid. The sialic acid recognition site may be masked by cis interactions with sialic acids on the same cell surface.

Cellular Location

[Isoform 1]: Cell membrane; Single-pass type I membrane protein

Tissue Location

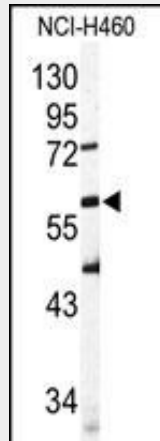
Expressed at high levels in placenta (cyto- and syncytiotrophoblastic cells) and at lower levels in spleen, peripheral blood leukocytes (predominantly B-cells) and small intestine

SIGLEC6 Antibody (N-term) - Protocols

Provided below are standard protocols that you may find useful for product applications.

- [Western Blot](#)
- [Blocking Peptides](#)
- [Dot Blot](#)
- [Immunohistochemistry](#)
- [Immunofluorescence](#)
- [Immunoprecipitation](#)
- [Flow Cytometry](#)
- [Cell Culture](#)

SIGLEC6 Antibody (N-term) - Images



Western blot analysis of SIGLEC6 Antibody (N-term) (Cat.#AP1624a) in NCI-H460 cell line lysates (35ug/lane). SIGLEC6 (arrow) was detected using the purified Pab.

SIGLEC6 Antibody (N-term) - Background

SIGLEC6 is a putative adhesion molecule that mediates sialic-acid dependent binding to cells by binding to alpha2,6-linked sialic acid. The sialic acid recognition site may be masked by cis interactions with sialic acids on the same cell surface. SIGLEC6, which interacts with LEP, is expressed at high levels in placenta (cyto- and syncytiotrophoblastic cells) and at lower levels in spleen, peripheral blood leukocytes (predominantly B-cells) and small intestine. It contains 1 copy of a cytoplasmic motif that is referred to as the immunoreceptor tyrosine-based inhibitor motif (ITIM). This motif is involved in downmodulation of cellular responses. The phosphorylated ITIM motif binds to the SH2 domain of PTPN6/SHP-1. The gene for SIGLEC6 belongs to the immunoglobulin superfamily.

SIGLEC6 Antibody (N-term) - References

Patel, N., et al., J. Biol. Chem. 274(32):22729-22738 (1999).
Takei, Y., et al., Cytogenet. Cell Genet. 78 (3-4), 295-300 (1997).
Patel, N., et al., J. Biol. Chem. 274, 28058-28058 (1999).