

Mouse Cdk10 Antibody (C-term)
Affinity Purified Rabbit Polyclonal Antibody (Pab)
Catalog # AP16261B

Specification

Mouse Cdk10 Antibody (C-term) - Product Information

Application	WB,E
Primary Accession	Q3UMM4
Other Accession	NP_919426.2 , NP_919428.1
Reactivity	Human
Host	Rabbit
Clonality	Polyclonal
Isotype	Rabbit IgG
Calculated MW	40961
Antigen Region	287-314

Mouse Cdk10 Antibody (C-term) - Additional Information

Gene ID 234854

Other Names

Cyclin-dependent kinase 10, Cell division protein kinase 10, Cdk10

Target/Specificity

This Mouse Cdk10 antibody is generated from rabbits immunized with a KLH conjugated synthetic peptide between 287-314 amino acids from the C-terminal region of mouse Cdk10.

Dilution

WB~~1:1000

E~~Use at an assay dependent concentration.

Format

Purified polyclonal antibody supplied in PBS with 0.09% (W/V) sodium azide. This antibody is purified through a protein A column, followed by peptide affinity purification.

Storage

Maintain refrigerated at 2-8°C for up to 2 weeks. For long term storage store at -20°C in small aliquots to prevent freeze-thaw cycles.

Precautions

Mouse Cdk10 Antibody (C-term) is for research use only and not for use in diagnostic or therapeutic procedures.

Mouse Cdk10 Antibody (C-term) - Protein Information

Name Cdk10

Function Cyclin-dependent kinase that phosphorylates the transcription factor ETS2 (in vitro) and

positively controls its proteasomal degradation (in cells). Involved in the regulation of actin cytoskeleton organization through the phosphorylation of actin dynamics regulators such as PKN2. Is a negative regulator of ciliogenesis through phosphorylation of PKN2 and promotion of RhoA signaling.

Cellular Location

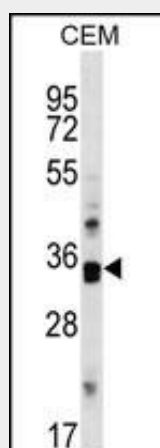
Cytoplasm, cytoskeleton, cilium basal body {ECO:0000250|UniProtKB:Q15131}

Mouse Cdk10 Antibody (C-term) - Protocols

Provided below are standard protocols that you may find useful for product applications.

- [Western Blot](#)
- [Blocking Peptides](#)
- [Dot Blot](#)
- [Immunohistochemistry](#)
- [Immunofluorescence](#)
- [Immunoprecipitation](#)
- [Flow Cytometry](#)
- [Cell Culture](#)

Mouse Cdk10 Antibody (C-term) - Images



Mouse Cdk10 Antibody (C-term) (Cat. #AP16261b) western blot analysis in CEM cell line lysates (35ug/lane). This demonstrates the Cdk10 antibody detected the Cdk10 protein (arrow).

Mouse Cdk10 Antibody (C-term) - Background

Cdk10 belongs to the CDK (cyclin-dependent kinase) subfamily of the Ser/Thr protein kinase family. The CDK subfamily members are highly similar to the gene products of *S. cerevisiae* cdc28, and *S. pombe* cdc2, and are known to be essential for cell cycle progression. The human ortholog has been shown to play a role in cellular proliferation. Multiple transcript variants encoding different isoforms have been found for this gene. A related pseudogene exists on chromosome 1. [provided by RefSeq].

Mouse Cdk10 Antibody (C-term) - References

Bagella, L., et al. J. Cell. Biochem. 99(3):978-985(2006)
Grana, X., et al. Oncogene 9(7):2097-2103(1994)