

SULT1A2 Antibody (C-term)
Affinity Purified Rabbit Polyclonal Antibody (Pab)
Catalog # AP16271b

Specification

SULT1A2 Antibody (C-term) - Product Information

Application	WB,E
Primary Accession	P50226
Other Accession	NP_803564.1 , NP_001045.1
Reactivity	Human
Host	Rabbit
Clonality	Polyclonal
Isotype	Rabbit IgG
Calculated MW	34310
Antigen Region	258-286

SULT1A2 Antibody (C-term) - Additional Information

Gene ID 6799

Other Names

Sulfotransferase 1A2, ST1A2, Aryl sulfotransferase 2, Phenol sulfotransferase 2, Phenol-sulfating phenol sulfotransferase 2, P-PST 2, SULT1A2, STP2

Target/Specificity

This SULT1A2 antibody is generated from rabbits immunized with a KLH conjugated synthetic peptide between 258-286 amino acids from the C-terminal region of human SULT1A2.

Dilution

WB~~1:1000

Format

Purified polyclonal antibody supplied in PBS with 0.09% (W/V) sodium azide. This antibody is purified through a protein A column, followed by peptide affinity purification.

Storage

Maintain refrigerated at 2-8°C for up to 2 weeks. For long term storage store at -20°C in small aliquots to prevent freeze-thaw cycles.

Precautions

SULT1A2 Antibody (C-term) is for research use only and not for use in diagnostic or therapeutic procedures.

SULT1A2 Antibody (C-term) - Protein Information

Name SULT1A2

Synonyms STP2

Function Sulfotransferase that utilizes 3'-phospho-5'-adenylyl sulfate (PAPS) as sulfonate donor to catalyze the sulfate conjugation of catecholamines, phenolic drugs and neurotransmitters. Is also responsible for the sulfonation and activation of minoxidil. Mediates the metabolic activation of carcinogenic N-hydroxyarylamines to DNA binding products and could so participate as modulating factor of cancer risk.

Cellular Location

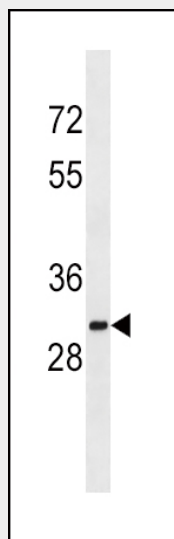
Cytoplasm.

SULT1A2 Antibody (C-term) - Protocols

Provided below are standard protocols that you may find useful for product applications.

- [Western Blot](#)
- [Blocking Peptides](#)
- [Dot Blot](#)
- [Immunohistochemistry](#)
- [Immunofluorescence](#)
- [Immunoprecipitation](#)
- [Flow Cytometry](#)
- [Cell Culture](#)

SULT1A2 Antibody (C-term) - Images



SULT1A2 Antibody (C-term) (Cat. #AP16271b) western blot analysis in K562 cell line lysates (35ug/lane). This demonstrates the SULT1A2 antibody detected the SULT1A2 protein (arrow).

SULT1A2 Antibody (C-term) - Background

SULT1A2 catalyzes the sulfate conjugation of catecholamines, phenolic drugs and neurotransmitters. Is also responsible for the sulfation and activation of minoxidil. Mediates the metabolic activation of carcinogenic N-hydroxyarylamines to DNA binding products and could so participate as modulating factor of cancer risk.