

**PNPLA6 Antibody (C-term)**  
**Affinity Purified Rabbit Polyclonal Antibody (Pab)**  
**Catalog # AP16273b**

**Specification**

---

**PNPLA6 Antibody (C-term) - Product Information**

Application	WB,E
Primary Accession	<a href="#">Q8IY17</a>
Other Accession	<a href="#">Q3TRM4</a> , <a href="#">NP_001159583.1</a> , <a href="#">NP_001159585.1</a>
Reactivity	Human
Predicted	Mouse
Host	Rabbit
Clonality	Polyclonal
Isotype	Rabbit IgG
Calculated MW	150954
Antigen Region	1000-1029

**PNPLA6 Antibody (C-term) - Additional Information**

**Gene ID** 10908

**Other Names**

Neuropathy target esterase, Patatin-like phospholipase domain-containing protein 6, PNPLA6, NTE

**Target/Specificity**

This PNPLA6 antibody is generated from rabbits immunized with a KLH conjugated synthetic peptide between 1000-1029 amino acids from the C-terminal region of human PNPLA6.

**Dilution**

WB~~1:1000

E~~Use at an assay dependent concentration.

**Format**

Purified polyclonal antibody supplied in PBS with 0.09% (W/V) sodium azide. This antibody is purified through a protein A column, followed by peptide affinity purification.

**Storage**

Maintain refrigerated at 2-8°C for up to 2 weeks. For long term storage store at -20°C in small aliquots to prevent freeze-thaw cycles.

**Precautions**

PNPLA6 Antibody (C-term) is for research use only and not for use in diagnostic or therapeutic procedures.

**PNPLA6 Antibody (C-term) - Protein Information**

**Name** PNPLA6 ([HGNC:16268](#))

### Synonyms NTE

**Function** Phospholipase B that deacylates intracellular phosphatidylcholine (PtdCho), generating glycerophosphocholine (GroPtdCho). This deacylation occurs at both sn-2 and sn-1 positions of PtdCho. Catalyzes the hydrolysis of several naturally occurring membrane-associated lipids (PubMed:[11927584](#)). Hydrolyzes lysophospholipids and monoacylglycerols, preferring the 1-acyl to the 2-acyl isomer. Does not catalyze hydrolysis of di- or triacylglycerols or fatty acid amides (PubMed:[11927584](#)).

### Cellular Location

Endoplasmic reticulum membrane; Single-pass type III membrane protein

### Tissue Location

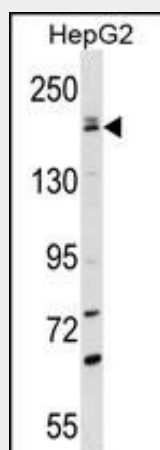
Expressed in brain, placenta, kidney, neuron and skeletal muscle. Expressed in the developing eye, pituitary and brain

### PNPLA6 Antibody (C-term) - Protocols

Provided below are standard protocols that you may find useful for product applications.

- [Western Blot](#)
- [Blocking Peptides](#)
- [Dot Blot](#)
- [Immunohistochemistry](#)
- [Immunofluorescence](#)
- [Immunoprecipitation](#)
- [Flow Cytometry](#)
- [Cell Culture](#)

### PNPLA6 Antibody (C-term) - Images



PNPLA6 Antibody (C-term) (Cat. #AP16273b) western blot analysis in HepG2 cell line lysates (35ug/lane). This demonstrates the PNPLA6 antibody detected the PNPLA6 protein (arrow).

### PNPLA6 Antibody (C-term) - Background

PNPLA6 is a phospholipase that deacetylates intracellular phosphatidylcholine to produce glycerophosphocholine. It is thought to function in neurite outgrowth and process elongation during neuronal differentiation. The protein is anchored

to the cytoplasmic face of the endoplasmic reticulum in both neurons and non-neuronal cells. Mutations in this gene result in autosomal recessive spastic paraplegia, and the protein is the target for neurodegeneration induced by organophosphorus compounds and chemical warfare agents. Multiple transcript variants encoding different isoforms have been found for this gene. [provided by RefSeq].

#### **PNPLA6 Antibody (C-term) - References**

Hein, N.D., et al. Toxicol. Lett. 199(1):1-5(2010)  
Chen, J.X., et al. Pharmacol. Res. 62(3):259-264(2010)  
Greiner, A.J., et al. Biochim. Biophys. Acta 1798(8):1533-1539(2010)  
Hein, N.D., et al. Toxicol. Lett. 196(2):67-73(2010)  
Saito, A., et al. J. Hum. Genet. 54(6):317-323(2009)