

RPL12 Antibody (Center)
Affinity Purified Rabbit Polyclonal Antibody (Pab)
Catalog # AP16275c**Specification**

RPL12 Antibody (Center) - Product Information

Application	WB,E
Primary Accession	P30050
Other Accession	P23358 , P35979 , P61284 , NP_000967.1 , G1SMR7
Reactivity	Human, Mouse
Predicted	Bovine, Rabbit, Rat
Host	Rabbit
Clonality	Polyclonal
Isotype	Rabbit IgG
Calculated MW	17819
Antigen Region	71-100

RPL12 Antibody (Center) - Additional Information**Gene ID** 6136**Other Names**

60S ribosomal protein L12, RPL12

Target/Specificity

This RPL12 antibody is generated from rabbits immunized with a KLH conjugated synthetic peptide between 71-100 amino acids from the Central region of human RPL12.

Dilution

WB~~1:1000

E~~Use at an assay dependent concentration.

Format

Purified polyclonal antibody supplied in PBS with 0.09% (W/V) sodium azide. This antibody is purified through a protein A column, followed by peptide affinity purification.

Storage

Maintain refrigerated at 2-8°C for up to 2 weeks. For long term storage store at -20°C in small aliquots to prevent freeze-thaw cycles.

Precautions

RPL12 Antibody (Center) is for research use only and not for use in diagnostic or therapeutic procedures.

RPL12 Antibody (Center) - Protein Information**Name** RPL12

Function Component of the large ribosomal subunit (PubMed:[25901680](#)). The ribosome is a large ribonucleoprotein complex responsible for the synthesis of proteins in the cell (PubMed:[25901680](#)). Binds directly to 26S ribosomal RNA (PubMed:[25901680](#)).

Cellular Location

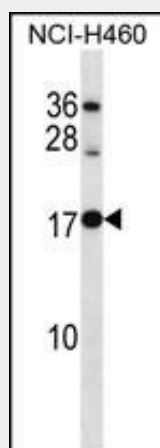
Cytoplasm

RPL12 Antibody (Center) - Protocols

Provided below are standard protocols that you may find useful for product applications.

- [Western Blot](#)
- [Blocking Peptides](#)
- [Dot Blot](#)
- [Immunohistochemistry](#)
- [Immunofluorescence](#)
- [Immunoprecipitation](#)
- [Flow Cytometry](#)
- [Cell Culture](#)

RPL12 Antibody (Center) - Images



RPL12 Antibody (Center) (Cat. #AP16275c) western blot analysis in NCI-H460 cell line lysates (35ug/lane). This demonstrates the RPL12 antibody detected the RPL12 protein (arrow).

RPL12 Antibody (Center) - Background

Ribosomes, the organelles that catalyze protein synthesis, consist of a small 40S subunit and a large 60S subunit. Together these subunits are composed of 4 RNA species and approximately 80 structurally distinct proteins. This gene encodes a ribosomal protein that is a component of the 60S subunit. The protein belongs to the L11P family of ribosomal proteins. It is located in the cytoplasm. The protein binds directly to the 26S rRNA. This gene is co-transcribed with the U65 snoRNA, which is located in its fourth intron. As is typical for genes encoding ribosomal proteins, there are multiple processed pseudogenes of this gene dispersed through the genome.

RPL12 Antibody (Center) - References

Letra, A., et al. Am. J. Med. Genet. A 152A (7), 1701-1710 (2010) :

Wheeler, H.E., et al. PLoS Genet. 5 (10), E1000685 (2009) :

Sugiyama, N., et al. Mol. Cell Proteomics 6(6):1103-1109(2007)

Olsen, J.V., et al. Cell 127(3):635-648(2006)

Beausoleil, S.A., et al. Nat. Biotechnol. 24(10):1285-1292(2006)

RPL12 Antibody (Center) - Citations

- [Ribosomal Stalk Protein Silencing Partially Corrects the \$\Delta\$ F508-CFTR Functional Expression Defect.](#)