

**SLAMF9 Antibody (C-term)**  
**Affinity Purified Rabbit Polyclonal Antibody (Pab)**  
**Catalog # AP16284b****Specification**

---

**SLAMF9 Antibody (C-term) - Product Information**

Application	WB,E
Primary Accession	<a href="#">O96A28</a>
Other Accession	<a href="#">NP_001139645.1</a> , <a href="#">NP_001139644.1</a> , <a href="#">NP_254273.2</a>
Reactivity	Human
Host	Rabbit
Clonality	Polyclonal
Isotype	Rabbit IgG
Calculated MW	32436
Antigen Region	242-270

**SLAMF9 Antibody (C-term) - Additional Information****Gene ID** 89886**Other Names**

SLAM family member 9, CD2 family member 10, CD2F-10, CD84 homolog 1, CD84-H1, SLAMF9, CD2F10

**Target/Specificity**

This SLAMF9 antibody is generated from rabbits immunized with a KLH conjugated synthetic peptide between 242-270 amino acids from the C-terminal region of human SLAMF9.

**Dilution**

WB~~1:2000

E~~Use at an assay dependent concentration.

**Format**

Purified polyclonal antibody supplied in PBS with 0.09% (W/V) sodium azide. This antibody is purified through a protein A column, followed by peptide affinity purification.

**Storage**

Maintain refrigerated at 2-8°C for up to 2 weeks. For long term storage store at -20°C in small aliquots to prevent freeze-thaw cycles.

**Precautions**

SLAMF9 Antibody (C-term) is for research use only and not for use in diagnostic or therapeutic procedures.

**SLAMF9 Antibody (C-term) - Protein Information****Name** SLAMF9

**Synonyms** CD2F10

**Function** May play a role in the immune response.

**Cellular Location**

Membrane; Single-pass type I membrane protein.

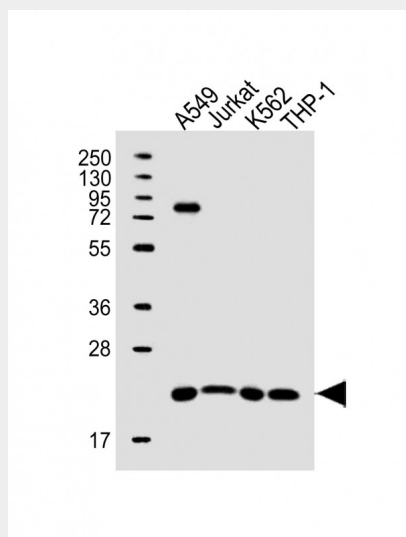
**Tissue Location**

Expression is predominantly restricted in hematopoietic tissues. Expressed in heart, spleen, liver, intestine, muscle and testis. Expressed in immune cells, including monocytes, dendritic, B- and T-cells. No expression was seen in peripheral blood leukocytes. Expressed in the leukocyte cell line THP-1

**SLAMF9 Antibody (C-term) - Protocols**

Provided below are standard protocols that you may find useful for product applications.

- [Western Blot](#)
- [Blocking Peptides](#)
- [Dot Blot](#)
- [Immunohistochemistry](#)
- [Immunofluorescence](#)
- [Immunoprecipitation](#)
- [Flow Cytometry](#)
- [Cell Culture](#)

**SLAMF9 Antibody (C-term) - Images**

All lanes : Anti-SLAMF9 Antibody (C-term) at 1:2000 dilution Lane 1: A549 whole cell lysate Lane 2: Jurkat whole cell lysate Lane 3: K562 whole cell lysate Lane 4: THP-1 whole cell lysate Lysates/proteins at 20 µg per lane. Secondary Goat Anti-Rabbit IgG, (H+L), Peroxidase conjugated at 1/10000 dilution. Predicted band size : 32 kDa Blocking/Dilution buffer: 5% NFDM/TBST.

**SLAMF9 Antibody (C-term) - Background**

SLAMF9 is a member of the signaling lymphocytic activation molecule family. The encoded protein is a cell surface

molecule that consists of two extracellular immunoglobulin domains, a transmembrane domain and a short cytoplasmic tail that lacks the signal transduction motifs found in other family members.

#### **SLAMF9 Antibody (C-term) - References**

Calpe, S., et al. Adv. Immunol. 97, 177-250 (2008) :  
Fraser, C.C., et al. Immunogenetics 53 (10-11), 843-850 (2002) :  
Fennelly, J.A., et al. Immunogenetics 53(7):599-602(2001)  
Zhang, W., et al. Clin. Cancer Res. 7 (3 SUPPL), 822S-829S (2001) :