

**ARMT1 Antibody (N-term)**  
**Affinity Purified Rabbit Polyclonal Antibody (Pab)**  
**Catalog # AP16287a****Specification**

---

**ARMT1 Antibody (N-term) - Product Information**

Application	WB,E
Primary Accession	<a href="#">Q9H993</a>
Other Accession	<a href="#">Q6AYT5</a> , <a href="#">NP_078849.1</a>
Reactivity	Human
Predicted	Rat
Host	Rabbit
Clonality	Polyclonal
Isotype	Rabbit IgG
Antigen Region	29-57

**ARMT1 Antibody (N-term) - Additional Information****Gene ID** 79624**Other Names**

UPF0364 protein C6orf211, C6orf211

**Target/Specificity**

This ARMT1 antibody is generated from rabbits immunized with a KLH conjugated synthetic peptide between 29-57 amino acids from the N-terminal region of human ARMT1.

**Dilution**

WB~~1:1000

E~~Use at an assay dependent concentration.

**Format**

Purified polyclonal antibody supplied in PBS with 0.09% (W/V) sodium azide. This antibody is purified through a protein A column, followed by peptide affinity purification.

**Storage**

Maintain refrigerated at 2-8°C for up to 2 weeks. For long term storage store at -20°C in small aliquots to prevent freeze-thaw cycles.

**Precautions**

ARMT1 Antibody (N-term) is for research use only and not for use in diagnostic or therapeutic procedures.

**ARMT1 Antibody (N-term) - Protein Information****Name** ARMT1 {ECO:0000303|PubMed:25732820, ECO:0000312|HGNC:HGNC:17872}**Function** Metal-dependent phosphatase that shows phosphatase activity against several

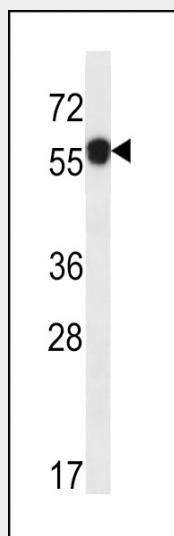
substrates, including fructose-1-phosphate and fructose-6-phosphate (By similarity). Its preference for fructose-1- phosphate, a strong glycation agent that causes DNA damage rather than a canonical yeast metabolite, suggests a damage-control function in hexose phosphate metabolism (By similarity). Has also been shown to have O-methyltransferase activity that methylates glutamate residues of target proteins to form gamma-glutamyl methyl ester residues (PubMed:[25732820](#)). Possibly methylates PCNA, suggesting it is involved in the DNA damage response (PubMed:[25732820](#)).

### ARMT1 Antibody (N-term) - Protocols

Provided below are standard protocols that you may find useful for product applications.

- [Western Blot](#)
- [Blocking Peptides](#)
- [Dot Blot](#)
- [Immunohistochemistry](#)
- [Immunofluorescence](#)
- [Immunoprecipitation](#)
- [Flow Cytometry](#)
- [Cell Culture](#)

### ARMT1 Antibody (N-term) - Images



ARMT1 Antibody (N-term) (Cat. #AP16287a) western blot analysis in ZR-75-1 cell line lysates (35ug/lane). This demonstrates the ARMT1 antibody detected the ARMT1 protein (arrow).

### ARMT1 Antibody (N-term) - References

Vieira, A.R., et al. Genet. Med. 10(9):668-674(2008)  
Ewing, R.M., et al. Mol. Syst. Biol. 3, 89 (2007) :  
Mungall, A.J., et al. Nature 425(6960):805-811(2003)