

**BTN2A1 Antibody (C-term)**  
**Affinity Purified Rabbit Polyclonal Antibody (Pab)**  
**Catalog # AP16288b****Specification**

---

**BTN2A1 Antibody (C-term) - Product Information**

Application	WB,E
Primary Accession	<a href="#">Q7KYR7</a>
Other Accession	<a href="#">NP_008980.1</a>
Reactivity	Human
Host	Rabbit
Clonality	Polyclonal
Isotype	Rabbit IgG
Calculated MW	59633
Antigen Region	344-373

**BTN2A1 Antibody (C-term) - Additional Information****Gene ID** 11120**Other Names**

Butyrophilin subfamily 2 member A1, BTN2A1, BT21, BTF1

**Target/Specificity**

This BTN2A1 antibody is generated from rabbits immunized with a KLH conjugated synthetic peptide between 344-373 amino acids from the C-terminal region of human BTN2A1.

**Dilution**

WB~~1:1000

E~~Use at an assay dependent concentration.

**Format**

Purified polyclonal antibody supplied in PBS with 0.09% (W/V) sodium azide. This antibody is purified through a protein A column, followed by peptide affinity purification.

**Storage**

Maintain refrigerated at 2-8°C for up to 2 weeks. For long term storage store at -20°C in small aliquots to prevent freeze-thaw cycles.

**Precautions**

BTN2A1 Antibody (C-term) is for research use only and not for use in diagnostic or therapeutic procedures.

**BTN2A1 Antibody (C-term) - Protein Information****Name** BTN2A1**Synonyms** BT2.1, BTF1

**Cellular Location**

Membrane; Single-pass type I membrane protein

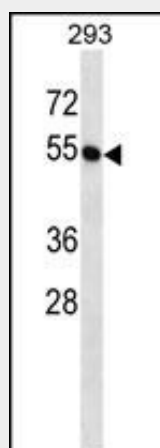
**Tissue Location**

Highly expressed in brain, bone marrow, small intestine, muscle, spleen and pancreas. Moderate expression was seen in lung, liver and kidney.

**BTN2A1 Antibody (C-term) - Protocols**

Provided below are standard protocols that you may find useful for product applications.

- [Western Blot](#)
- [Blocking Peptides](#)
- [Dot Blot](#)
- [Immunohistochemistry](#)
- [Immunofluorescence](#)
- [Immunoprecipitation](#)
- [Flow Cytometry](#)
- [Cell Culture](#)

**BTN2A1 Antibody (C-term) - Images**

BTN2A1 Antibody (C-term) (Cat. #AP16288b) western blot analysis in 293 cell line lysates (35ug/lane). This demonstrates the BTN2A1 antibody detected the BTN2A1 protein (arrow).

**BTN2A1 Antibody (C-term) - Background**

BTN2A1 is a member of the BTN2 subfamily of genes, which encode proteins belonging to the butyrophilin protein family. The gene is located in a cluster on chromosome 6, consisting of seven genes belonging to the expanding B7/butyrophilin-like group, a subset of the immunoglobulin gene superfamily. The encoded protein is an integral plasma membrane B box protein involved in lipid, fatty-acid and sterol metabolism. Multiple alternatively spliced transcript variants encoding different isoforms have been found for this gene.

**BTN2A1 Antibody (C-term) - References**

Benyamin, B., et al. Am. J. Hum. Genet. 84(1):60-65(2009)

Malcherek, G., et al. J. Immunol. 179(6):3804-3811(2007)

Lamesch, P., et al. Genomics 89(3):307-315(2007)

Mungall, A.J., et al. Nature 425(6960):805-811(2003)

Rhodes, D.A., et al. Genomics 71(3):351-362(2001)