

**PAP2D Antibody (Center)**  
**Affinity Purified Rabbit Polyclonal Antibody (Pab)**  
**Catalog # AP16291c**

**Specification**

---

**PAP2D Antibody (Center) - Product Information**

Application	WB,E
Primary Accession	<a href="#">Q32ZL2</a>
Other Accession	<a href="#">Q8BJ52</a> , <a href="#">NP_001010861.1</a> , <a href="#">NP_001032394.1</a>
Reactivity	Human
Predicted	Mouse
Host	Rabbit
Clonality	Polyclonal
Isotype	Rabbit IgG
Calculated MW	35427
Antigen Region	78-106

**PAP2D Antibody (Center) - Additional Information**

**Gene ID** 163404

**Other Names**

Lipid phosphate phosphatase-related protein type 5, 313-, Phosphatidic acid phosphatase 2d, Plasticity-related gene 5 protein, PRG-5, LPPR5, PAP2D

**Target/Specificity**

This PAP2D antibody is generated from rabbits immunized with a KLH conjugated synthetic peptide between 78-106 amino acids from the Central region of human PAP2D.

**Dilution**

WB~~1:1000

**Format**

Purified polyclonal antibody supplied in PBS with 0.09% (W/V) sodium azide. This antibody is purified through a protein A column, followed by peptide affinity purification.

**Storage**

Maintain refrigerated at 2-8°C for up to 2 weeks. For long term storage store at -20°C in small aliquots to prevent freeze-thaw cycles.

**Precautions**

PAP2D Antibody (Center) is for research use only and not for use in diagnostic or therapeutic procedures.

**PAP2D Antibody (Center) - Protein Information**

**Name** PLPPR5 ([HGNC:31703](#))

**Function** Induces filopodia formation and promotes neurite growth in a CDC42-independent manner; impedes neurite growth inhibitory-mediated axonal retraction.

**Cellular Location**

Cell membrane {ECO:0000250|UniProtKB:Q8BJ52}; Multi-pass membrane protein

**Tissue Location**

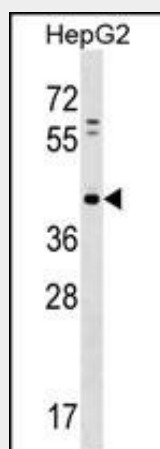
Isoform 1 is expressed in brain, lung, kidney and colon. Isoform 2 is expressed in placenta, skeletal muscle and kidney

**PAP2D Antibody (Center) - Protocols**

Provided below are standard protocols that you may find useful for product applications.

- [Western Blot](#)
- [Blocking Peptides](#)
- [Dot Blot](#)
- [Immunohistochemistry](#)
- [Immunofluorescence](#)
- [Immunoprecipitation](#)
- [Flow Cytometry](#)
- [Cell Culture](#)

**PAP2D Antibody (Center) - Images**



PAP2D Antibody (Center) (Cat. #AP16291c) western blot analysis in HepG2 cell line lysates (35ug/lane). This demonstrates the PAP2D antibody detected the PAP2D protein (arrow).

**PAP2D Antibody (Center) - Background**

PAP2D is a type 2 member of the phosphatidic acid phosphatase (PAP) family. All type 2 members of this protein family contain 6 transmembrane regions, and a consensus N-glycosylation site. PAPs convert phosphatidic acid to diacylglycerol, and function in de novo synthesis of glycerolipids as well as in receptor-activated signal transduction mediated by phospholipase D. Alternate transcriptional splice variants, encoding different isoforms, have been characterized. [provided by RefSeq].

**PAP2D Antibody (Center) - References**

Rose, J.E., et al. Mol. Med. 16 (7-8), 247-253 (2010) :  
Broggini, T., et al. Mol. Biol. Cell 21(4):521-537(2010)  
Sun, L., et al. Mol. Cell. Biochem. 272 (1-2), 91-96 (2005) :