

LRRC26 Antibody (C-term)
Affinity Purified Rabbit Polyclonal Antibody (Pab)
Catalog # AP16312b

Specification

LRRC26 Antibody (C-term) - Product Information

Application	WB,E
Primary Accession	Q2I0M4
Other Accession	NP_001013675.1
Reactivity	Human
Host	Rabbit
Clonality	Polyclonal
Isotype	Rabbit IgG
Calculated MW	34857
Antigen Region	289-318

LRRC26 Antibody (C-term) - Additional Information

Gene ID 389816

Other Names

Leucine-rich repeat-containing protein 26, BK channel auxiliary gamma subunit LRRC26, Cytokeratin-associated protein in cancer, LRRC26, CAPC

Target/Specificity

This LRRC26 antibody is generated from rabbits immunized with a KLH conjugated synthetic peptide between 289-318 amino acids from the C-terminal region of human LRRC26.

Dilution

WB~~1:1000

E~~Use at an assay dependent concentration.

Format

Purified polyclonal antibody supplied in PBS with 0.09% (W/V) sodium azide. This antibody is purified through a protein A column, followed by peptide affinity purification.

Storage

Maintain refrigerated at 2-8°C for up to 2 weeks. For long term storage store at -20°C in small aliquots to prevent freeze-thaw cycles.

Precautions

LRRC26 Antibody (C-term) is for research use only and not for use in diagnostic or therapeutic procedures.

LRRC26 Antibody (C-term) - Protein Information

Name LRRC26

Synonyms CAPC

Function Auxiliary protein of the large-conductance, voltage and calcium-activated potassium channel (BK alpha). Required for the conversion of BK alpha channels from a high-voltage to a low-voltage activated channel type in non-excitabile cells. These are characterized by negative membrane voltages and constant low levels of calcium.

Cellular Location

Cell membrane; Single-pass type I membrane protein. Cytoplasm, cytoskeleton. Note=Localizes to the cytoplasm when expressed at high levels.

Tissue Location

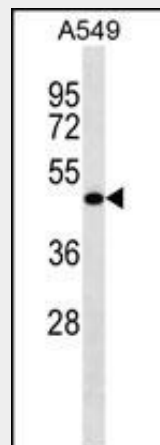
Isoform 1 is expressed highly in normal prostate and salivary gland, very weakly in colon, pancreas, and intestine, and not at all in other tissues. Isoform 1 is expressed highly in many cancer cell lines and in breast cancer, pancreatic cancer and colon cancer. Isoform 2 is expressed in cancer cell lines

LRRC26 Antibody (C-term) - Protocols

Provided below are standard protocols that you may find useful for product applications.

- [Western Blot](#)
- [Blocking Peptides](#)
- [Dot Blot](#)
- [Immunohistochemistry](#)
- [Immunofluorescence](#)
- [Immunoprecipitation](#)
- [Flow Cytometry](#)
- [Cell Culture](#)

LRRC26 Antibody (C-term) - Images



LRRC26 Antibody (C-term) (Cat. #AP16312b) western blot analysis in A549 cell line lysates (35ug/lane). This demonstrates the LRRC26 antibody detected the LRRC26 protein (arrow).

LRRC26 Antibody (C-term) - Background

Auxiliary protein of the large-conductance, voltage and calcium-activated potassium channel (BK alpha). Required for the conversion of BK alpha channels from a high-voltage to a low-voltage activated channel type in non-excitabile cells. These are characterized by negative membrane

voltages and constant low levels of calcium.

LRRC26 Antibody (C-term) - References

Yan, J., et al. Nature 466(7305):513-516(2010)

Anaganti, S., et al. Biochem. Biophys. Res. Commun. 380(3):508-513(2009)

Wang, A.G., et al. Biochem. Biophys. Res. Commun. 345(3):1022-1032(2006)

Egland, K.A., et al. Proc. Natl. Acad. Sci. U.S.A. 103(15):5929-5934(2006)