

SFTPb Antibody (Center)
Affinity Purified Rabbit Polyclonal Antibody (Pab)
Catalog # AP16320c**Specification**

SFTPb Antibody (Center) - Product Information

Application	WB,E
Primary Accession	P07988
Other Accession	NP_000533.3 , NP_942140.2
Reactivity	Human
Host	Rabbit
Clonality	Polyclonal
Isotype	Rabbit IgG
Calculated MW	42117
Antigen Region	129-158

SFTPb Antibody (Center) - Additional Information**Gene ID** 6439**Other Names**

Pulmonary surfactant-associated protein B, SP-B, 18 kDa pulmonary-surfactant protein, 6 kDa protein, Pulmonary surfactant-associated proteolipid SPL(Phe), SFTPb, SFTP3

Target/Specificity

This SFTPb antibody is generated from rabbits immunized with a KLH conjugated synthetic peptide between 129-158 amino acids from the Central region of human SFTPb.

Dilution

WB~~1:1000

E~~Use at an assay dependent concentration.

Format

Purified polyclonal antibody supplied in PBS with 0.09% (W/V) sodium azide. This antibody is purified through a protein A column, followed by peptide affinity purification.

Storage

Maintain refrigerated at 2-8°C for up to 2 weeks. For long term storage store at -20°C in small aliquots to prevent freeze-thaw cycles.

Precautions

SFTPb Antibody (Center) is for research use only and not for use in diagnostic or therapeutic procedures.

SFTPb Antibody (Center) - Protein Information**Name** SFTPb

Synonyms SFTP3

Function Pulmonary surfactant-associated proteins promote alveolar stability by lowering the surface tension at the air-liquid interface in the peripheral air spaces. SP-B increases the collapse pressure of palmitic acid to nearly 70 millinewtons per meter.

Cellular Location

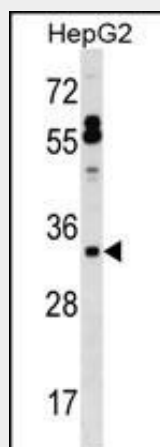
Secreted, extracellular space, surface film.

SFTPB Antibody (Center) - Protocols

Provided below are standard protocols that you may find useful for product applications.

- [Western Blot](#)
- [Blocking Peptides](#)
- [Dot Blot](#)
- [Immunohistochemistry](#)
- [Immunofluorescence](#)
- [Immunoprecipitation](#)
- [Flow Cytometry](#)
- [Cell Culture](#)

SFTPB Antibody (Center) - Images



SFTPB Antibody (Center) (Cat. #AP16320c) western blot analysis in HepG2 cell line lysates (35ug/lane). This demonstrates the SFTPB antibody detected the SFTPB protein (arrow).

SFTPB Antibody (Center) - Background

SFTPB is the pulmonary-associated surfactant protein B (SPB), an amphipathic surfactant protein essential for lung function and homeostasis after birth. Pulmonary surfactant is a surface-active lipoprotein complex composed of 90% lipids and 10% proteins which include plasma proteins and apolipoproteins SPA, SPB, SPC and SPD. The surfactant is secreted by the alveolar cells of the lung and maintains the stability of pulmonary tissue by reducing the surface tension of fluids that coat the lung. The SPB enhances the rate of spreading and increases the stability of surfactant monolayers in vitro. Multiple mutations in this gene have been identified, which cause pulmonary surfactant metabolism

dysfunction type 1, also called pulmonary alveolar proteinosis due to surfactant protein B deficiency, and are associated with fatal respiratory distress in the neonatal period. Alternatively spliced transcript variants encoding the same protein have been identified.

SFTPB Antibody (Center) - References

Baekvad-Hansen, M., et al. Eur. Respir. J. (2010) In press :
Kim, W.J., et al. Eur. Respir. J. (2010) In press :
Schuurhof, A., et al. Pediatr. Pulmonol. 45(6):608-613(2010)
Cho, M.H., et al. Respir. Res. 11, 30 (2010) :
Chaiworapongsa, T., et al. J. Matern. Fetal. Neonatal. Med. 21(9):663-670(2008)