

BOLL Antibody (N-term)
Affinity Purified Rabbit Polyclonal Antibody (Pab)
Catalog # AP16329a**Specification**

BOLL Antibody (N-term) - Product Information

Application	WB,E
Primary Accession	Q8N9W6
Other Accession	Q8WP23 , NP_149019.1 , NP_932074.1
Reactivity	Human
Predicted	Monkey
Host	Rabbit
Clonality	Polyclonal
Isotype	Rabbit IgG
Calculated MW	31301
Antigen Region	23-51

BOLL Antibody (N-term) - Additional Information**Gene ID** 66037**Other Names**

Protein boule-like, BOLL, BOULE

Target/Specificity

This BOLL antibody is generated from rabbits immunized with a KLH conjugated synthetic peptide between 23-51 amino acids from the N-terminal region of human BOLL.

Dilution

WB~~1:1000

E~~Use at an assay dependent concentration.

Format

Purified polyclonal antibody supplied in PBS with 0.09% (W/V) sodium azide. This antibody is purified through a protein A column, followed by peptide affinity purification.

Storage

Maintain refrigerated at 2-8°C for up to 2 weeks. For long term storage store at -20°C in small aliquots to prevent freeze-thaw cycles.

Precautions

BOLL Antibody (N-term) is for research use only and not for use in diagnostic or therapeutic procedures.

BOLL Antibody (N-term) - Protein Information**Name** BOLL

Synonyms BOULE

Function Probable RNA-binding protein, which may be required during spermatogenesis. May act by binding to the 3'-UTR of mRNAs and regulating their translation (By similarity).

Cellular Location

Cytoplasm

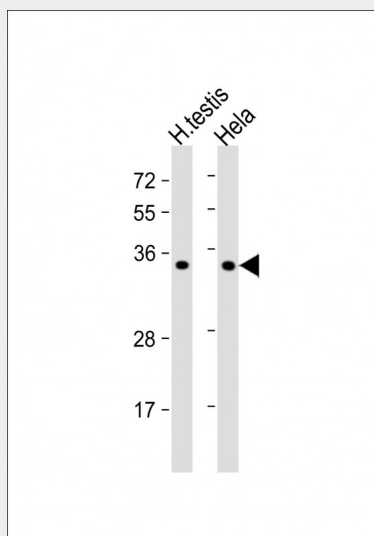
Tissue Location

Testis specific. Not expressed in early embryos, primordial germ cells and spermatogonial cells. First expressed in the cytoplasm of spermatocytes and then persists through meiosis

BOLL Antibody (N-term) - Protocols

Provided below are standard protocols that you may find useful for product applications.

- [Western Blot](#)
- [Blocking Peptides](#)
- [Dot Blot](#)
- [Immunohistochemistry](#)
- [Immunofluorescence](#)
- [Immunoprecipitation](#)
- [Flow Cytometry](#)
- [Cell Culture](#)

BOLL Antibody (N-term) - Images

All lanes : Anti-BOLL Antibody (N-term) at 1:1000 dilution Lane 1: human testis lysate Lane 2: HeLa whole cell lysate Lysates/proteins at 20 µg per lane. Secondary Goat Anti-Rabbit IgG, (H+L), Peroxidase conjugated at 1/10000 dilution. Predicted band size : 31 kDa Blocking/Dilution buffer: 5% NFD/MTBST.

BOLL Antibody (N-term) - Background

BOLL belongs to the DAZ gene family required for germ cell development. It encodes an RNA-binding protein which is more similar to Drosophila Boule than to human proteins encoded by genes

DAZ (deleted in azoospermia) or DAZL (deleted in azoospermia-like). Loss of this gene function results in the absence of sperm in semen (azoospermia). Histological studies demonstrated that the primary defect is at the meiotic G2/M transition.

BOLL Antibody (N-term) - References

Chen, P., et al. J. Androl. 31(2):163-168(2010)
Kee, K., et al. Nature 462(7270):222-225(2009)
Lin, Y.M., et al. J. Clin. Endocrinol. Metab. 94(7):2650-2657(2009)
Bilguvar, K., et al. Nat. Genet. 40(12):1472-1477(2008)
Lamesch, P., et al. Genomics 89(3):307-315(2007)