

GFRA3 Antibody (Center)
Affinity Purified Rabbit Polyclonal Antibody (Pab)
Catalog # AP16331C**Specification**

GFRA3 Antibody (Center) - Product Information

| | |
|-------------------|--|
| Application | WB,E |
| Primary Accession | O60609 |
| Other Accession | O35118 , NP_001487.2 |
| Reactivity | Human |
| Predicted | Mouse |
| Host | Rabbit |
| Clonality | Polyclonal |
| Isotype | Rabbit IgG |
| Calculated MW | 44511 |
| Antigen Region | 116-144 |

GFRA3 Antibody (Center) - Additional Information**Gene ID** 2676**Other Names**

GDNF family receptor alpha-3, GDNF receptor alpha-3, GDNFR-alpha-3, GFR-alpha-3, GFRA3

Target/Specificity

This GFRA3 antibody is generated from rabbits immunized with a KLH conjugated synthetic peptide between 116-144 amino acids from the Central region of human GFRA3.

Dilution

WB~~1:1000

E~~Use at an assay dependent concentration.

Format

Purified polyclonal antibody supplied in PBS with 0.09% (W/V) sodium azide. This antibody is purified through a protein A column, followed by peptide affinity purification.

Storage

Maintain refrigerated at 2-8°C for up to 2 weeks. For long term storage store at -20°C in small aliquots to prevent freeze-thaw cycles.

Precautions

GFRA3 Antibody (Center) is for research use only and not for use in diagnostic or therapeutic procedures.

GFRA3 Antibody (Center) - Protein Information**Name** GFRA3

Function Receptor for artemin (ARTN), a growth factor that supports the survival of sensory and sympathetic peripheral neurons (PubMed:[31535977](#), PubMed:[9883723](#)). ARTN-binding leads to autophosphorylation and activation of the RET receptor (PubMed:[31535977](#), PubMed:[9883723](#)).

Cellular Location

Cell membrane; Lipid-anchor, GPI-anchor

Tissue Location

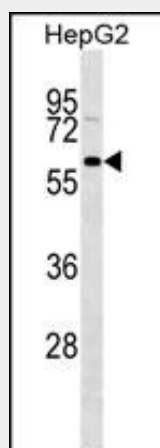
Widely expressed in adult and fetus which exhibit a similar pattern. Essentially not expressed in the central nervous system, but highly expressed in several sensory and sympathetic ganglia of the peripheral nervous system. Moderate expression in many non- neuronal tissues, particularly those of the digestive and urogenital systems, but high expression in stomach and appendix. Several types of glandular tissues show low expression. Very low or no expression detected in the hematopoietic system.

GFRA3 Antibody (Center) - Protocols

Provided below are standard protocols that you may find useful for product applications.

- [Western Blot](#)
- [Blocking Peptides](#)
- [Dot Blot](#)
- [Immunohistochemistry](#)
- [Immunofluorescence](#)
- [Immunoprecipitation](#)
- [Flow Cytometry](#)
- [Cell Culture](#)

GFRA3 Antibody (Center) - Images



GFRA3 Antibody (Center) (Cat. #AP16331c) western blot analysis in HepG2 cell line lysates (35ug/lane). This demonstrates the GFRA3 antibody detected the GFRA3 protein (arrow).

GFRA3 Antibody (Center) - Background

GFRA3 is a glycosylphosphatidylinositol(GPI)-linked cell surface receptor and a member of the GDNF receptor family. It forms a signaling receptor complex with RET tyrosine kinase receptor and binds the ligand, artemin.

GFRA3 Antibody (Center) - References

Souza, R.P., et al. J Psychiatr Res 44(11):700-706(2010)
Zhu, D.L., et al. Nan Fang Yi Ke Da Xue Xue Bao 29(3):428-432(2009)
Wang, X., et al. Structure 14(6):1083-1092(2006)
Yang, C., et al. J. Mol. Histol. 37 (1-2), 69-77 (2006) :
Zhang, Z., et al. Protein Sci. 13(10):2819-2824(2004)