

**Mouse Csk Antibody (C-term)**  
**Affinity Purified Rabbit Polyclonal Antibody (Pab)**  
**Catalog # AP16354b**

**Specification**

---

**Mouse Csk Antibody (C-term) - Product Information**

Application	WB,E
Primary Accession	<a href="#">P41241</a>
Other Accession	<a href="#">P32577</a> , <a href="#">P41240</a> , <a href="#">P41239</a> , <a href="#">Q0VBZ0</a>
Reactivity	Human, Mouse
Predicted	Bovine, Chicken, Rat
Host	Rabbit
Clonality	Polyclonal
Isotype	Rabbit IgG
Calculated MW	50716
Antigen Region	377-404

**Mouse Csk Antibody (C-term) - Additional Information**

**Gene ID** 12988

**Other Names**

Tyrosine-protein kinase CSK, C-Src kinase, Protein-tyrosine kinase MPK-2, p50CSK, Csk

**Target/Specificity**

This Mouse Csk antibody is generated from rabbits immunized with a KLH conjugated synthetic peptide between 377-404 amino acids from the C-terminal region of mouse Csk.

**Dilution**

WB~~1:1000

E~~Use at an assay dependent concentration.

**Format**

Purified polyclonal antibody supplied in PBS with 0.09% (W/V) sodium azide. This antibody is purified through a protein A column, followed by peptide affinity purification.

**Storage**

Maintain refrigerated at 2-8°C for up to 2 weeks. For long term storage store at -20°C in small aliquots to prevent freeze-thaw cycles.

**Precautions**

Mouse Csk Antibody (C-term) is for research use only and not for use in diagnostic or therapeutic procedures.

**Mouse Csk Antibody (C-term) - Protein Information**

**Name** Csk

**Function** Non-receptor tyrosine-protein kinase that plays an important role in the regulation of cell growth, differentiation, migration and immune response. Phosphorylates tyrosine residues located in the C- terminal tails of Src-family kinases (SFKs) including LCK, SRC, HCK, FYN, LYN, CSK or YES1. Upon tail phosphorylation, Src-family members engage in intramolecular interactions between the phosphotyrosine tail and the SH2 domain that result in an inactive conformation. To inhibit SFKs, CSK is recruited to the plasma membrane via binding to transmembrane proteins or adapter proteins located near the plasma membrane. Suppresses signaling by various surface receptors, including T-cell receptor (TCR) and B-cell receptor (BCR) by phosphorylating and maintaining inactive several positive effectors such as FYN or LCK (By similarity).

#### **Cellular Location**

Cytoplasm. Cell membrane. Note=Mainly cytoplasmic, also present in lipid rafts

#### **Tissue Location**

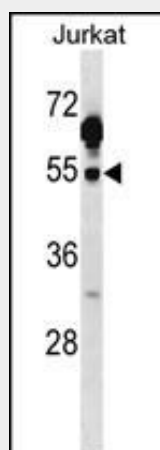
Ubiquitous, but most abundant in thymus and spleen, as well as in neonatal brain

### **Mouse Csk Antibody (C-term) - Protocols**

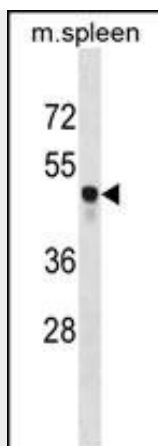
Provided below are standard protocols that you may find useful for product applications.

- [Western Blot](#)
- [Blocking Peptides](#)
- [Dot Blot](#)
- [Immunohistochemistry](#)
- [Immunofluorescence](#)
- [Immunoprecipitation](#)
- [Flow Cytometry](#)
- [Cell Culture](#)

### **Mouse Csk Antibody (C-term) - Images**



Mouse Csk Antibody (C-term) (Cat. #AP16354b) western blot analysis in Jurkat cell line lysates (35ug/lane). This demonstrates the Csk antibody detected the Csk protein (arrow).



Mouse Csk Antibody (C-term) (Cat. #AP16354b) western blot analysis in mouse spleen tissue lysates (35ug/lane). This demonstrates the Csk antibody detected the Csk protein (arrow).

#### **Mouse Csk Antibody (C-term) - Background**

Specifically phosphorylates 'Tyr-504' on LCK, which acts as a negative regulatory site. Can also act on the LYN and FYN kinases.