

**ELL2 Antibody (C-term)**  
**Affinity Purified Rabbit Polyclonal Antibody (Pab)**  
**Catalog # AP16355b****Specification**

---

**ELL2 Antibody (C-term) - Product Information**

|                   |                             |
|-------------------|-----------------------------|
| Application       | WB,E                        |
| Primary Accession | <a href="#">O00472</a>      |
| Other Accession   | <a href="#">NP_036213.2</a> |
| Reactivity        | Human                       |
| Host              | Rabbit                      |
| Clonality         | Polyclonal                  |
| Isotype           | Rabbit IgG                  |
| Calculated MW     | 72324                       |
| Antigen Region    | 450-479                     |

**ELL2 Antibody (C-term) - Additional Information****Gene ID** 22936**Other Names**

RNA polymerase II elongation factor ELL2, ELL2

**Target/Specificity**

This ELL2 antibody is generated from rabbits immunized with a KLH conjugated synthetic peptide between 450-479 amino acids from the C-terminal region of human ELL2.

**Dilution**

WB~~1:1000

E~~Use at an assay dependent concentration.

**Format**

Purified polyclonal antibody supplied in PBS with 0.09% (W/V) sodium azide. This antibody is purified through a protein A column, followed by peptide affinity purification.

**Storage**

Maintain refrigerated at 2-8°C for up to 2 weeks. For long term storage store at -20°C in small aliquots to prevent freeze-thaw cycles.

**Precautions**

ELL2 Antibody (C-term) is for research use only and not for use in diagnostic or therapeutic procedures.

**ELL2 Antibody (C-term) - Protein Information****Name** ELL2**Function** Elongation factor component of the super elongation complex (SEC), a complex required

to increase the catalytic rate of RNA polymerase II transcription by suppressing transient pausing by the polymerase at multiple sites along the DNA. Component of the little elongation complex (LEC), a complex required to regulate small nuclear RNA (snRNA) gene transcription by RNA polymerase II and III (PubMed:[22195968](#)). Plays a role in immunoglobulin secretion in plasma cells: directs efficient alternative mRNA processing, influencing both proximal poly(A) site choice and exon skipping, as well as immunoglobulin heavy chain (IgH) alternative processing. Probably acts by regulating histone modifications accompanying transition from membrane-specific to secretory IgH mRNA expression.

#### **Cellular Location**

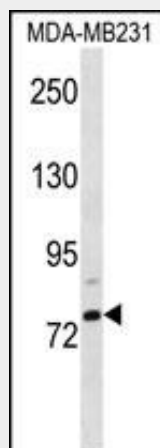
Nucleus.

#### **ELL2 Antibody (C-term) - Protocols**

Provided below are standard protocols that you may find useful for product applications.

- [Western Blot](#)
- [Blocking Peptides](#)
- [Dot Blot](#)
- [Immunohistochemistry](#)
- [Immunofluorescence](#)
- [Immunoprecipitation](#)
- [Flow Cytometry](#)
- [Cell Culture](#)

#### **ELL2 Antibody (C-term) - Images**



ELL2 Antibody (C-term) (Cat. #AP16355b) western blot analysis in MDA-MB231 cell line lysates (35ug/lane). This demonstrates the ELL2 antibody detected the ELL2 protein (arrow).

#### **ELL2 Antibody (C-term) - Background**

Elongation factor that can increase the catalytic rate of RNA polymerase II transcription by suppressing transient pausing by the polymerase at multiple sites along the DNA.

#### **ELL2 Antibody (C-term) - References**

Rose, J.E., et al. Mol. Med. 16 (7-8), 247-253 (2010) ; Martincic, K., et al. Nat. Immunol. 10(10):1102-1109(2009) Simone, F., et al. Blood 101(6):2355-2362(2003) Simone, F., et al. Blood 98(1):201-209(2001) Shilatifard, A., et al. Proc. Natl. Acad. Sci. U.S.A. 94(8):3639-3643(1997)