

**GRHL1 Antibody (Center)**  
**Affinity Purified Rabbit Polyclonal Antibody (Pab)**  
**Catalog # AP16357c****Specification**

---

**GRHL1 Antibody (Center) - Product Information**

Application	WB,E
Primary Accession	<a href="#">O9NZI5</a>
Other Accession	<a href="#">O921D9</a> , <a href="#">NP_937825.2</a>
Reactivity	Human
Predicted	Mouse
Host	Rabbit
Clonality	Polyclonal
Isotype	Rabbit IgG
Calculated MW	70113
Antigen Region	294-322

**GRHL1 Antibody (Center) - Additional Information****Gene ID** 29841**Other Names**

Grainyhead-like protein 1 homolog, Mammalian grainyhead, NH32, Transcription factor CP2-like 2, Transcription factor LBP-32, GRHL1, LBP32, MGR, TFCP2L2

**Target/Specificity**

This GRHL1 antibody is generated from rabbits immunized with a KLH conjugated synthetic peptide between 294-322 amino acids from the Central region of human GRHL1.

**Dilution**

WB~~1:1000

E~~Use at an assay dependent concentration.

**Format**

Purified polyclonal antibody supplied in PBS with 0.09% (W/V) sodium azide. This antibody is purified through a protein A column, followed by peptide affinity purification.

**Storage**

Maintain refrigerated at 2-8°C for up to 2 weeks. For long term storage store at -20°C in small aliquots to prevent freeze-thaw cycles.

**Precautions**

GRHL1 Antibody (Center) is for research use only and not for use in diagnostic or therapeutic procedures.

**GRHL1 Antibody (Center) - Protein Information****Name** GRHL1 ([HGNC:17923](#))

**Function** Transcription factor involved in epithelial development. Binds directly to the consensus DNA sequence 5'-AACCGGTT-3' (PubMed:[12175488](#), PubMed:[18288204](#), PubMed:[29309642](#)). Important regulator of DSG1 in the context of hair anchorage and epidermal differentiation, participates in the maintenance of the skin barrier. There is no genetic interaction with GRHL3, nor functional cooperativity due to diverse target gene selectivity during epithelia development (By similarity). May play a role in regulating glucose homeostasis and insulin signaling.

#### Cellular Location

Nucleus

#### Tissue Location

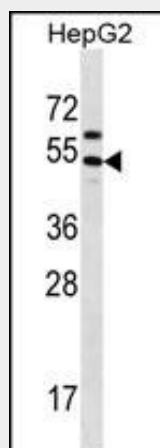
Isoform 1 is highly expressed in brain, pancreas, tonsil, placenta and kidney. Isoform 2 is highly expressed in brain and liver. Expressed at very low levels in non-steroidogenic cells

### GRHL1 Antibody (Center) - Protocols

Provided below are standard protocols that you may find useful for product applications.

- [Western Blot](#)
- [Blocking Peptides](#)
- [Dot Blot](#)
- [Immunohistochemistry](#)
- [Immunofluorescence](#)
- [Immunoprecipitation](#)
- [Flow Cytometry](#)
- [Cell Culture](#)

### GRHL1 Antibody (Center) - Images



GRHL1 Antibody (Center) (Cat. #AP16357c) western blot analysis in HepG2 cell line lysates (35ug/lane). This demonstrates the GRHL1 antibody detected the GRHL1 protein (arrow).

### GRHL1 Antibody (Center) - Background

GRHL1 is a transcription factor. Isoform 1 may function as an activator and isoform 2 as a repressor in tissues where both forms are expressed. May play a role in development. May be involved in epidermal differentiation (By similarity). Binds and transactivates the EN1 promoter.