

MDS1 Antibody (Center)
Affinity Purified Rabbit Polyclonal Antibody (Pab)
Catalog # AP16358c

Specification

MDS1 Antibody (Center) - Product Information

Application	WB,E
Primary Accession	Q13465
Other Accession	NP_004982.2
Reactivity	Mouse
Host	Rabbit
Clonality	Polyclonal
Isotype	Rabbit IgG
Antigen Region	81-109

MDS1 Antibody (Center) - Additional Information

Other Names

MDS1 and EVI1 complex locus protein MDS1, Myelodysplasia syndrome 1 protein, Myelodysplasia syndrome-associated protein 1, MECOM, MDS1

Target/Specificity

This MDS1 antibody is generated from rabbits immunized with a KLH conjugated synthetic peptide between 81-109 amino acids from the Central region of human MDS1.

Dilution

WB~~1:1000

E~~Use at an assay dependent concentration.

Format

Purified polyclonal antibody supplied in PBS with 0.09% (W/V) sodium azide. This antibody is purified through a protein A column, followed by peptide affinity purification.

Storage

Maintain refrigerated at 2-8°C for up to 2 weeks. For long term storage store at -20°C in small aliquots to prevent freeze-thaw cycles.

Precautions

MDS1 Antibody (Center) is for research use only and not for use in diagnostic or therapeutic procedures.

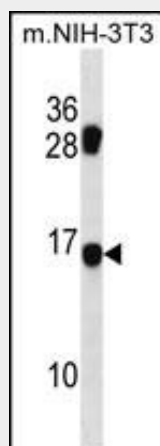
MDS1 Antibody (Center) - Protein Information

MDS1 Antibody (Center) - Protocols

Provided below are standard protocols that you may find useful for product applications.

- [Western Blot](#)
- [Blocking Peptides](#)
- [Dot Blot](#)
- [Immunohistochemistry](#)
- [Immunofluorescence](#)
- [Immunoprecipitation](#)
- [Flow Cytometry](#)
- [Cell Culture](#)

MDS1 Antibody (Center) - Images



MDS1 Antibody (Center) (Cat. #AP16358c) western blot analysis in mouse NIH-3T3 cell line lysates (35ug/lane). This demonstrates the MDS1 antibody detected the MDS1 protein (arrow).

MDS1 Antibody (Center) - Background

MDS1 is located at 3q26 170-400 kb upstream (telomeric) of EVI1 in the chromosomal region in which some of the breakpoints 5' of EVI1 have been mapped. MDS1 has been identified as a single gene as well as a previously unreported exon (s) of EVI1. MDS1 exists in normal tissues both as a unique transcript and as a normal fusion transcript with EVI1, with an additional 188 codons at the 5' end of the previously reported EVI1 open reading frame. In cells with translocation t (3;21), additional fusion transcripts are AML1-MDS1 and AML1-MDS1-EVI1. EVI1 and MDS1 are involved in leukemia associated with chromosomal translocation breakpoints in the region between these genes.

MDS1 Antibody (Center) - References

Gomez-Benito, M., et al. Br. J. Cancer 103(8):1292-1296(2010)
Meyer, T.E., et al. PLoS Genet. 6 (8) (2010) :
Goyama, S., et al. Int. J. Hematol. 91(5):753-757(2010)
Jugessur, A., et al. PLoS ONE 5 (7), E11493 (2010) :
Haas, K., et al. Genes Chromosomes Cancer 47(4):288-298(2008)