

**CDCP1 Antibody (C-term)**  
**Affinity Purified Rabbit Polyclonal Antibody (Pab)**  
**Catalog # AP16364B****Specification**

---

**CDCP1 Antibody (C-term) - Product Information**

Application	WB,E
Primary Accession	<a href="#">O9H5V8</a>
Other Accession	<a href="#">NP_835488.1</a> , <a href="#">NP_073753.3</a>
Reactivity	Human
Host	Rabbit
Clonality	Polyclonal
Isotype	Rabbit IgG
Calculated MW	92932
Antigen Region	704-732

**CDCP1 Antibody (C-term) - Additional Information****Gene ID** 64866**Other Names**

CUB domain-containing protein 1, Membrane glycoprotein gp140, Subtractive immunization M plus HEp3-associated 135 kDa protein, SIMA135, Transmembrane and associated with src kinases, CD318, CDCP1, TRASK

**Target/Specificity**

This CDCP1 antibody is generated from rabbits immunized with a KLH conjugated synthetic peptide between 704-732 amino acids from the C-terminal region of human CDCP1.

**Dilution**

WB~~1:1000

E~~Use at an assay dependent concentration.

**Format**

Purified polyclonal antibody supplied in PBS with 0.09% (W/V) sodium azide. This antibody is purified through a protein A column, followed by peptide affinity purification.

**Storage**

Maintain refrigerated at 2-8°C for up to 2 weeks. For long term storage store at -20°C in small aliquots to prevent freeze-thaw cycles.

**Precautions**

CDCP1 Antibody (C-term) is for research use only and not for use in diagnostic or therapeutic procedures.

**CDCP1 Antibody (C-term) - Protein Information****Name** CDCP1

**Synonyms** TRASK

**Function** May be involved in cell adhesion and cell matrix association. May play a role in the regulation of anchorage versus migration or proliferation versus differentiation via its phosphorylation. May be a novel marker for leukemia diagnosis and for immature hematopoietic stem cell subsets. Belongs to the tetraspanin web involved in tumor progression and metastasis.

**Cellular Location**

[Isoform 1]: Cell membrane; Single-pass membrane protein. Note=Shedding may also lead to a soluble peptide

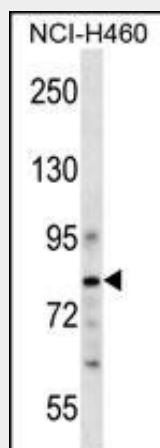
**Tissue Location**

Highly expressed in mitotic cells with low expression during interphase. Detected at highest levels in skeletal muscle and colon with lower levels in kidney, small intestine, placenta and lung. Up-regulated in a number of human tumor cell lines, as well as in colorectal cancer, breast carcinoma and lung cancer. Also expressed in cells with phenotypes reminiscent of mesenchymal stem cells and neural stem cells.

**CDCP1 Antibody (C-term) - Protocols**

Provided below are standard protocols that you may find useful for product applications.

- [Western Blot](#)
- [Blocking Peptides](#)
- [Dot Blot](#)
- [Immunohistochemistry](#)
- [Immunofluorescence](#)
- [Immunoprecipitation](#)
- [Flow Cytometry](#)
- [Cell Culture](#)

**CDCP1 Antibody (C-term) - Images**

CDCP1 Antibody (C-term) (Cat. #AP16364b) western blot analysis in NCI-H460 cell line lysates (35ug/lane). This demonstrates the CDCP1 antibody detected the CDCP1 protein (arrow).

**CDCP1 Antibody (C-term) - Background**

CDCP1 is a transmembrane protein containing three extracellular CUB domains. This protein is

found to be overexpressed in colon and lung cancers. Its expression level is correlated with the metastatic ability of carcinoma cells. This protein is located on the cell surface. It has been shown to be tyrosine phosphorylated in a cancer cell line. Alternatively spliced transcript variants encoding distinct isoforms have been reported.

#### **CDCP1 Antibody (C-term) - References**

He, Y., et al. J. Biol. Chem. 285(34):26162-26173(2010)  
Miyazawa, Y., et al. Cancer Res. 70(12):5136-5146(2010)  
Mamat, S., et al. Oncol. Rep. 23(5):1221-1227(2010)  
Fukuchi, K., et al. Mol. Pharm. 7(1):245-253(2010)  
Deryugina, E.I., et al. Mol. Cancer Res. 7(8):1197-1211(2009)