

RANBP3 Antibody (N-term)
Affinity Purified Rabbit Polyclonal Antibody (Pab)
Catalog # AP16369a**Specification**

RANBP3 Antibody (N-term) - Product Information

Application	WB,E
Primary Accession	Q9H6Z4
Other Accession	NP_015559.2 , NP_003615.2 , NP_015561.1
Reactivity	Human
Host	Rabbit
Clonality	Polyclonal
Isotype	Rabbit IgG
Calculated MW	60210
Antigen Region	26-55

RANBP3 Antibody (N-term) - Additional Information**Gene ID** 8498**Other Names**

Ran-binding protein 3, RanBP3, RANBP3

Target/Specificity

This RANBP3 antibody is generated from rabbits immunized with a KLH conjugated synthetic peptide between 26-55 amino acids from the N-terminal region of human RANBP3.

Dilution

WB~~1:1000

E~~Use at an assay dependent concentration.

Format

Purified polyclonal antibody supplied in PBS with 0.09% (W/V) sodium azide. This antibody is purified through a protein A column, followed by peptide affinity purification.

Storage

Maintain refrigerated at 2-8°C for up to 2 weeks. For long term storage store at -20°C in small aliquots to prevent freeze-thaw cycles.

Precautions

RANBP3 Antibody (N-term) is for research use only and not for use in diagnostic or therapeutic procedures.

RANBP3 Antibody (N-term) - Protein Information**Name** RANBP3**Function** Acts as a cofactor for XPO1/CRM1-mediated nuclear export, perhaps as export complex

scaffolding protein. Bound to XPO1/CRM1, stabilizes the XPO1/CRM1-cargo interaction. In the absence of Ran-bound GTP prevents binding of XPO1/CRM1 to the nuclear pore complex. Binds to CHC1/RCC1 and increases the guanine nucleotide exchange activity of CHC1/RCC1. Recruits XPO1/CRM1 to CHC1/RCC1 in a Ran-dependent manner. Negative regulator of TGF-beta signaling through interaction with the R-SMAD proteins, SMAD2 and SMAD3, and mediating their nuclear export.

Cellular Location

Cytoplasm. Nucleus. Note=Nuclear import is promoted by phosphorylation at Ser-126 and is dependent on KPNA4.

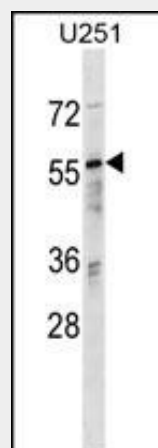
Tissue Location

Widely expressed with high levels in testis and heart.

RANBP3 Antibody (N-term) - Protocols

Provided below are standard protocols that you may find useful for product applications.

- [Western Blot](#)
- [Blocking Peptides](#)
- [Dot Blot](#)
- [Immunohistochemistry](#)
- [Immunofluorescence](#)
- [Immunoprecipitation](#)
- [Flow Cytometry](#)
- [Cell Culture](#)

RANBP3 Antibody (N-term) - Images

RANBP3 Antibody (N-term) (Cat. #AP16369a) western blot analysis in U251 cell line lysates (35ug/lane). This demonstrates the RANBP3 antibody detected the RANBP3 protein (arrow).

RANBP3 Antibody (N-term) - Background

RANBP3 is a protein with a RanBD1 domain that is found in both the nucleus and cytoplasm. This protein plays a role in nuclear export as part of a heteromeric complex. Alternate transcriptional splice variants, encoding different isoforms, have been characterized.

RANBP3 Antibody (N-term) - References

Dai, F., et al. Dev. Cell 16(3):345-357(2009)
Yoon, S.O., et al. Mol. Cell 29(3):362-375(2008)
Olsen, J.V., et al. Cell 127(3):635-648(2006)
Hakata, Y., et al. Mol. Cell. Biol. 23(23):8751-8761(2003)
Nemergut, M.E., et al. J. Biol. Chem. 277(20):17385-17388(2002)