

**RPL26 Antibody (C-term)**  
**Affinity Purified Rabbit Polyclonal Antibody (Pab)**  
**Catalog # AP16410b****Specification**

---

**RPL26 Antibody (C-term) - Product Information**

Application	WB,E
Primary Accession	<a href="#">P61254</a>
Other Accession	<a href="#">P12749</a> , <a href="#">P61255</a> , <a href="#">P61256</a> , <a href="#">P47832</a> , <a href="#">P61257</a> , <a href="#">O9UNX3</a> , <a href="#">NP_000978.1</a> , <a href="#">G1SOH0</a>
Reactivity	Human
Predicted	Bovine, Chicken, Monkey, Mouse, Rabbit, Rat
Host	Rabbit
Clonality	Polyclonal
Isotype	Rabbit IgG
Calculated MW	17258
Antigen Region	98-127

**RPL26 Antibody (C-term) - Additional Information****Gene ID** 6154**Other Names**

60S ribosomal protein L26, RPL26

**Target/Specificity**

This RPL26 antibody is generated from rabbits immunized with a KLH conjugated synthetic peptide between 98-127 amino acids from the C-terminal region of human RPL26.

**Dilution**

WB~~1:1000

**Format**

Purified polyclonal antibody supplied in PBS with 0.09% (W/V) sodium azide. This antibody is purified through a protein A column, followed by peptide affinity purification.

**Storage**

Maintain refrigerated at 2-8°C for up to 2 weeks. For long term storage store at -20°C in small aliquots to prevent freeze-thaw cycles.

**Precautions**

RPL26 Antibody (C-term) is for research use only and not for use in diagnostic or therapeutic procedures.

**RPL26 Antibody (C-term) - Protein Information****Name** RPL26

**Function** Component of the large ribosomal subunit (PubMed:[26100019](#), PubMed:[23636399](#), PubMed:[32669547](#)). The ribosome is a large ribonucleoprotein complex responsible for the synthesis of proteins in the cell (PubMed:[26100019](#), PubMed:[23636399](#), PubMed:[32669547](#)).

**Cellular Location**

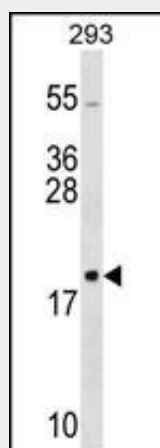
Cytoplasm.

**RPL26 Antibody (C-term) - Protocols**

Provided below are standard protocols that you may find useful for product applications.

- [Western Blot](#)
- [Blocking Peptides](#)
- [Dot Blot](#)
- [Immunohistochemistry](#)
- [Immunofluorescence](#)
- [Immunoprecipitation](#)
- [Flow Cytometry](#)
- [Cell Culture](#)

**RPL26 Antibody (C-term) - Images**



RPL26 Antibody (C-term) (Cat. #AP16410b) western blot analysis in 293 cell line lysates (35ug/lane). This demonstrates the RPL26 antibody detected the RPL26 protein (arrow).

**RPL26 Antibody (C-term) - Background**

Ribosomes, the organelles that catalyze protein synthesis, consist of a small 40S subunit and a large 60S subunit. Together these subunits are composed of 4 RNA species and approximately 80 structurally distinct proteins. This gene encodes a ribosomal protein that is a component of the 60S subunit. The protein belongs to the L24P family of ribosomal proteins. It is located in the cytoplasm. As is typical for genes encoding ribosomal proteins, there are multiple processed pseudogenes of this gene dispersed through the genome.

**RPL26 Antibody (C-term) - References**

Ofir-Rosenfeld, Y., et al. Mol. Cell 32(2):180-189(2008) Robledo, S., et al. RNA 14(9):1918-1929(2008) Ewing, R.M., et al. Mol. Syst. Biol. 3, 89 (2007) : Kapp, L.D., et al. Annu. Rev. Biochem. 73, 657-704 (2004) : Mazumder, B., et al. Cell 115(2):187-198(2003)