

**TBL1XR1 Antibody (N-term)**  
**Affinity Purified Rabbit Polyclonal Antibody (Pab)**  
**Catalog # AP16411A**

**Specification**

---

**TBL1XR1 Antibody (N-term) - Product Information**

Application	WB,E
Primary Accession	<a href="#">Q9BZK7</a>
Other Accession	<a href="#">Q8BHJ5</a> , <a href="#">Q7SZM9</a> , <a href="#">NP_078941.2</a>
Reactivity	Human
Predicted	Xenopus, Mouse
Host	Rabbit
Clonality	Polyclonal
Isotype	Rabbit IgG
Calculated MW	55595
Antigen Region	109-137

**TBL1XR1 Antibody (N-term) - Additional Information**

**Gene ID** 79718

**Other Names**

F-box-like/WD repeat-containing protein TBL1XR1, Nuclear receptor corepressor/HDAC3 complex subunit TBLR1, TBL1-related protein 1, Transducin beta-like 1X-related protein 1, TBL1XR1, IRA1, TBLR1

**Target/Specificity**

This TBL1XR1 antibody is generated from rabbits immunized with a KLH conjugated synthetic peptide between 109-137 amino acids from the N-terminal region of human TBL1XR1.

**Dilution**

WB~~1:1000

E~~Use at an assay dependent concentration.

**Format**

Purified polyclonal antibody supplied in PBS with 0.09% (W/V) sodium azide. This antibody is purified through a protein A column, followed by peptide affinity purification.

**Storage**

Maintain refrigerated at 2-8°C for up to 2 weeks. For long term storage store at -20°C in small aliquots to prevent freeze-thaw cycles.

**Precautions**

TBL1XR1 Antibody (N-term) is for research use only and not for use in diagnostic or therapeutic procedures.

**TBL1XR1 Antibody (N-term) - Protein Information**

**Name** TBL1XR1

**Synonyms** IRA1, TBLR1

**Function** F-box-like protein involved in the recruitment of the ubiquitin/19S proteasome complex to nuclear receptor-regulated transcription units. Plays an essential role in transcription activation mediated by nuclear receptors. Probably acts as integral component of the N-Cor corepressor complex that mediates the recruitment of the 19S proteasome complex, leading to the subsequent proteasomal degradation of N-Cor complex, thereby allowing cofactor exchange, and transcription activation.

**Cellular Location**

Nucleus.

**Tissue Location**

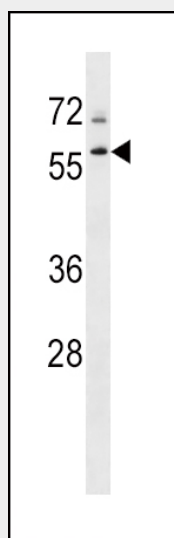
Widely expressed including the pituitary, hypothalamus, white and brown adipose tissue, muscle and liver

**TBL1XR1 Antibody (N-term) - Protocols**

Provided below are standard protocols that you may find useful for product applications.

- [Western Blot](#)
- [Blocking Peptides](#)
- [Dot Blot](#)
- [Immunohistochemistry](#)
- [Immunofluorescence](#)
- [Immunoprecipitation](#)
- [Flow Cytometry](#)
- [Cell Culture](#)

**TBL1XR1 Antibody (N-term) - Images**



TBL1XR1 Antibody (N-term) (Cat. #AP16411a) western blot analysis in K562 cell line lysates (35ug/lane). This demonstrates the TBL1XR1 antibody detected the TBL1XR1 protein (arrow).

**TBL1XR1 Antibody (N-term) - Background**

TBL1XR1 has sequence similarity with members of the WD40 repeat-containing protein family. The WD40 group is a large family of proteins, which appear to have a regulatory function. It is believed that the WD40 repeats mediate protein-protein interactions and members of the family are involved in signal transduction, RNA processing, gene regulation, vesicular trafficking, cytoskeletal assembly and may play a role in the control of cytotypic differentiation.

#### **TBL1XR1 Antibody (N-term) - References**

Rose, J.E., et al. Mol. Med. 16 (7-8), 247-253 (2010) :  
Rothenberg, M.E., et al. Nat. Genet. 42(4):289-291(2010)  
Parker, H., et al. Genes Chromosomes Cancer 47(12):1118-1125(2008)  
Ishii, S., et al. Proc. Natl. Acad. Sci. U.S.A. 105(11):4179-4184(2008)  
Li, J., et al. Nat. Cell Biol. 10(2):160-169(2008)