

MED26 Antibody (Center)
Affinity Purified Rabbit Polyclonal Antibody (Pab)
Catalog # AP16422c**Specification**

MED26 Antibody (Center) - Product Information

Application	WB,E
Primary Accession	O95402
Other Accession	NP_004822.2
Reactivity	Human
Host	Rabbit
Clonality	Polyclonal
Isotype	Rabbit IgG
Calculated MW	65446
Antigen Region	191-220

MED26 Antibody (Center) - Additional Information**Gene ID** 9441**Other Names**

Mediator of RNA polymerase II transcription subunit 26, Activator-recruited cofactor 70 kDa component, ARC70, Cofactor required for Sp1 transcriptional activation subunit 7, CRSP complex subunit 7, Mediator complex subunit 26, Transcriptional coactivator CRSP70, MED26, ARC70, CRSP7

Target/Specificity

This MED26 antibody is generated from rabbits immunized with a KLH conjugated synthetic peptide between 191-220 amino acids from the Central region of human MED26.

Dilution

WB~~1:1000

E~~Use at an assay dependent concentration.

Format

Purified polyclonal antibody supplied in PBS with 0.09% (W/V) sodium azide. This antibody is purified through a protein A column, followed by peptide affinity purification.

Storage

Maintain refrigerated at 2-8°C for up to 2 weeks. For long term storage store at -20°C in small aliquots to prevent freeze-thaw cycles.

Precautions

MED26 Antibody (Center) is for research use only and not for use in diagnostic or therapeutic procedures.

MED26 Antibody (Center) - Protein Information

Name MED26

Synonyms ARC70, CRSP7

Function Component of the Mediator complex, a coactivator involved in the regulated transcription of nearly all RNA polymerase II-dependent genes. Mediator functions as a bridge to convey information from gene-specific regulatory proteins to the basal RNA polymerase II transcription machinery. Mediator is recruited to promoters by direct interactions with regulatory proteins and serves as a scaffold for the assembly of a functional pre-initiation complex with RNA polymerase II and the general transcription factors.

Cellular Location

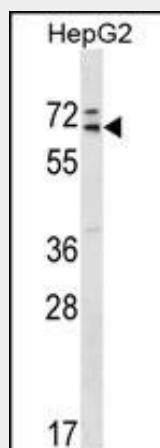
Nucleus.

MED26 Antibody (Center) - Protocols

Provided below are standard protocols that you may find useful for product applications.

- [Western Blot](#)
- [Blocking Peptides](#)
- [Dot Blot](#)
- [Immunohistochemistry](#)
- [Immunofluorescence](#)
- [Immunoprecipitation](#)
- [Flow Cytometry](#)
- [Cell Culture](#)

MED26 Antibody (Center) - Images



MED26 Antibody (Center) (Cat. #AP16422c) western blot analysis in HepG2 cell line lysates (35ug/lane). This demonstrates the MED26 antibody detected the MED26 protein (arrow).

MED26 Antibody (Center) - Background

The activation of gene transcription is a multistep process that is triggered by factors that recognize transcriptional enhancer sites in DNA. These factors work with co-activators to direct transcriptional initiation by the RNA polymerase II apparatus. The protein encoded by this gene is a subunit of the CRSP (cofactor required for SP1 activation) complex, which, along

with TFIID, is required for efficient activation by SP1. This protein is also a component of other multisubunit complexes e.g. thyroid hormone receptor-(TR-) associated proteins which interact with TR and facilitate TR function on DNA templates in conjunction with initiation factors and cofactors.

MED26 Antibody (Center) - References

Ding, N., et al. J. Biol. Chem. 284(5):2648-2656(2009)
Olsen, J.V., et al. Cell 127(3):635-648(2006)
Olsen, J.V., et al. Cell 127(3):635-648(2006)
Zhang, X., et al. Mol. Cell 19(1):89-100(2005)
Sato, S., et al. Mol. Cell 14(5):685-691(2004)