

SAFB2 Antibody (Center)
Affinity Purified Rabbit Polyclonal Antibody (Pab)
Catalog # AP16425C**Specification**

SAFB2 Antibody (Center) - Product Information

Application	WB,E
Primary Accession	Q14151
Other Accession	NP_055464.1
Reactivity	Human
Host	Rabbit
Clonality	Polyclonal
Isotype	Rabbit IgG
Calculated MW	107473
Antigen Region	529-558

SAFB2 Antibody (Center) - Additional Information**Gene ID** 9667**Other Names**

Scaffold attachment factor B2, SAF-B2, SAFB2, KIAA0138

Target/Specificity

This SAFB2 antibody is generated from rabbits immunized with a KLH conjugated synthetic peptide between 529-558 amino acids from the Central region of human SAFB2.

Dilution

WB~~1:1000

Format

Purified polyclonal antibody supplied in PBS with 0.09% (W/V) sodium azide. This antibody is purified through a protein A column, followed by peptide affinity purification.

Storage

Maintain refrigerated at 2-8°C for up to 2 weeks. For long term storage store at -20°C in small aliquots to prevent freeze-thaw cycles.

Precautions

SAFB2 Antibody (Center) is for research use only and not for use in diagnostic or therapeutic procedures.

SAFB2 Antibody (Center) - Protein Information**Name** SAFB2**Synonyms** KIAA0138

Function Binds to scaffold/matrix attachment region (S/MAR) DNA. Can function as an estrogen receptor corepressor and can also inhibit cell proliferation.

Cellular Location

Cytoplasm. Nucleus.

Tissue Location

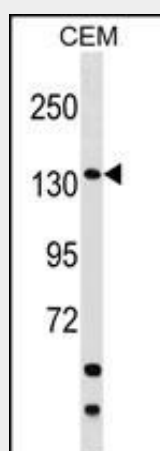
Expressed at high levels in the CNS and at low levels in the liver. Expressed in a wide number of breast cancer cell lines

SAFB2 Antibody (Center) - Protocols

Provided below are standard protocols that you may find useful for product applications.

- [Western Blot](#)
- [Blocking Peptides](#)
- [Dot Blot](#)
- [Immunohistochemistry](#)
- [Immunofluorescence](#)
- [Immunoprecipitation](#)
- [Flow Cytometry](#)
- [Cell Culture](#)

SAFB2 Antibody (Center) - Images



SAFB2 Antibody (Center) (Cat. #AP16425c) western blot analysis in CEM cell line lysates (35ug/lane). This demonstrates the SAFB2 antibody detected the SAFB2 protein (arrow).

SAFB2 Antibody (Center) - Background

SAFB2 binds to scaffold/matrix attachment region (S/MAR) DNA. Can function as an estrogen receptor corepressor and can also inhibit cell proliferation.

SAFB2 Antibody (Center) - References

- Hammerich-Hille, S., et al. Breast Cancer Res. Treat. 121(2):503-509(2010)
Hammerich-Hille, S., et al. J. Biol. Chem. 285(6):3608-3616(2010)
Tsianou, D., et al. FEBS J. 276(18):5212-5227(2009)
Bergman, A., et al. BMC Med. Genet. 9, 108 (2008) :
Olsen, J.V., et al. Cell 127(3):635-648(2006)