

**ENOSF1 Antibody (N-term)**  
**Affinity Purified Rabbit Polyclonal Antibody (Pab)**  
**Catalog # AP16426A****Specification**

---

**ENOSF1 Antibody (N-term) - Product Information**

Application	WB,E
Primary Accession	<a href="#">Q7L5Y1</a>
Other Accession	<a href="#">NP_001119595.1</a> , <a href="#">NP_974487.1</a> , <a href="#">NP_059982.2</a>
Reactivity	Human
Host	Rabbit
Clonality	Polyclonal
Isotype	Rabbit IgG
Calculated MW	49786
Antigen Region	63-92

**ENOSF1 Antibody (N-term) - Additional Information****Gene ID** 55556**Other Names**

Mitochondrial enolase superfamily member 1, Antisense RNA to thymidylate synthase, rTS, L-fuconate dehydratase, ENOSF1, RTS, TYMSAS

**Target/Specificity**

This ENOSF1 antibody is generated from rabbits immunized with a KLH conjugated synthetic peptide between 63-92 amino acids from the N-terminal region of human ENOSF1.

**Dilution**

WB~~1:1000

E~~Use at an assay dependent concentration.

**Format**

Purified polyclonal antibody supplied in PBS with 0.09% (W/V) sodium azide. This antibody is purified through a protein A column, followed by peptide affinity purification.

**Storage**

Maintain refrigerated at 2-8°C for up to 2 weeks. For long term storage store at -20°C in small aliquots to prevent freeze-thaw cycles.

**Precautions**

ENOSF1 Antibody (N-term) is for research use only and not for use in diagnostic or therapeutic procedures.

**ENOSF1 Antibody (N-term) - Protein Information****Name** ENOSF1

**Synonyms** RTS, TYMSAS

**Function** Plays a role in the catabolism of L-fucose, a sugar that is part of the carbohydrates that are attached to cellular glycoproteins. Catalyzes the dehydration of L-fuconate to 2-keto-3-deoxy-L-fuconate by the abstraction of the 2-proton to generate an enediolate intermediate that is stabilized by the magnesium ion (PubMed:[24697329](#)).

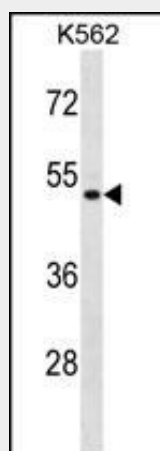
**Cellular Location**

Mitochondrion.

**ENOSF1 Antibody (N-term) - Protocols**

Provided below are standard protocols that you may find useful for product applications.

- [Western Blot](#)
- [Blocking Peptides](#)
- [Dot Blot](#)
- [Immunohistochemistry](#)
- [Immunofluorescence](#)
- [Immunoprecipitation](#)
- [Flow Cytometry](#)
- [Cell Culture](#)

**ENOSF1 Antibody (N-term) - Images**

ENOSF1 Antibody (N-term) (Cat. #AP16426a) western blot analysis in K562 cell line lysates (35ug/lane). This demonstrates the ENOSF1 antibody detected the ENOSF1 protein (arrow).

**ENOSF1 Antibody (N-term) - Background**

ENOSF1 was originally identified as a naturally occurring antisense transcript to the human thymidylate synthase gene. Alternate splice variants have been described, one of which (named rTSalpha) represents an alternate 3'UTR that is complementary to the 3'UTR and terminal intron of the thymidylate synthase (TS) RNA and down-regulates TS expression. Other transcript variants (rTSbeta and rTSgamma) do not overlap the TS locus. The function of this gene appears to be primarily to regulate expression of the TS locus both via the antisense transcript as well as through the encoded proteins. [provided by

RefSeq].

### **ENOSF1 Antibody (N-term) - References**

Giusti, B., et al. Thromb. Haemost. 104(2):231-242(2010)  
Wang, Y., et al. J. Hum. Genet. 55(8):490-494(2010)  
Cross, D.S., et al. BMC Genet. 11, 51 (2010) :  
Giusti, B., et al. J. Med. Genet. 45(11):721-730(2008)  
Giusti, B., et al. Biochem. Genet. 46 (7-8), 406-423 (2008) :